



WE MAKE YOUR TECHNOLOGY WORK



ROTAREX

VALVES - FITTINGS - REGULATORS



CYLINDER CONNECTORS & ACCESSORIES

TABLE OF CONTENTS

COMPONENTS & MANUFACTURING	P.004
MATERIALS / HOW TO ORDER	P.005
GASES / NORMS ASSIGNEMENT TABLE	P.007
STANDARD FEATURES CGA, DIN, BS, AFNOR, JIS	P.008
- UHP	P.008
- HP	P.009
CGA/DISS	P.010
- STANDARD CONNECTORS	P.010
- STANDARD ADAPTORS & BLANK PLUGS	P.012
CGA	P.014
- STANDARD INLET CONNECTORS	P.014
- STANDARD ADAPTORS, BLANK PLUGS & CAPS	P.016
- STANDARD CYLINDER VALVE OUTLET SEAL CAPS & PLUGS	P.018
DIN	P.020
- STANDARD INLET CONNECTORS	P.020
- STANDARD ADAPTORS, BLANK PLUGS & CAPS	P.022
- STANDARD CYLINDER VALVE OUTLET SEAL CAPS & PLUGS	P.024
BS	P.026
- STANDARD INLET CONNECTORS	P.026
- STANDARD ADAPTORS, BLANK PLUGS & CAPS	P.030
- STANDARD CYLINDER VALVE OUTLET SEAL CAPS & PLUGS	P.031
AFNOR	P.032
- STANDARD ADAPTORS, BLANK PLUGS & CAPS	P.032
- STANDARD CYLINDER VALVE OUTLET SEAL CAPS & PLUGS	P.034
JIS	P.035
- STANDARD INLET CONNECTORS	P.035
- STANDARD ADAPTORS, BLANK PLUGS & CAPS	P.036
- STANDARD CYLINDER VALVE OUTLET SEAL CAPS & PLUGS	P.037

COMPONENTS/MANUFACTURING

ROTAREX EQUIPMENT - COMPONENTS

- Full range of HP & UHP Products
(Cylinder connectors, cap nuts, adaptors, gaskets)
- Upstream connection fits all local norms and standards – CGA, DISS, JIS, DIN, BS, NF
- **Downstream connection**
 - Imperial and metric BWO ends,
 - face seal glands
 - NPT
- **Materials of construction**
 - Standards: 316L MOD VAR, 316L LS,
 - Brass
 - Options: Hastelloy®, Nickel
- Customized solutions on request



ROTAREX EQUIPMENT - MANUFACTURING

- ISO 9001 certification
- Fully integrated processing (machining, electropolishing, decontamination, packaging)
- Certified class 10 CR
- **Products manufactured at our « THREE STAR PROCESS » standards which include:**
 - Full traceability at all steps (SPC CAQS)
 - Continuous monitoring of key process parameters.
 - Consistent checking of product performances regarding both functionality and cleanliness.



MATERIALS

EXPLANATION OF LEGENDS

- **S** = Stainless Steel AISI/316L
- **V** = AISI 316L AOD-VAR
- **N** = Nickel
- **H** = Hastelloy®
- **B** = Brass
- **SS 303** = Stainless Steel AISI 303

EXPLANATION OF CONNECTIONS AND GASKETS MATERIALS

- **MM** = connection Metal/Metal
- **PCTFE** = Polychlorotrifluorethylene
- **PVDF** = Polyvinylidene fluoride
- **EPDM** = Ethylene - Propylene - Rubber
- **FRM** = Fluorocarbon - Rubber
- **CR** = Chloroprene - Rubber
- **NI** = Nickel
- **SP** = Silver plated stainless Steel

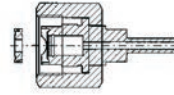
EXPLANATION OF SURFACE FINISH

- **Ra 0.2 EP** : Average Roughness 0.2 µm Electro-polished
- **Ra 0.4 EP** : Average Roughness 0.4 µm Electro-polished
- **Ra 0.8 EP** : Average Roughness 0.8 µm Non Electro-polished

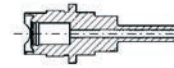
HOW TO ORDER

ACCORDING TO THE PIECES YOU WANT TO ORDER PLEASE REFER TO THE CORRESPONDING COLUMNS IN THE FOLLOWING PAGES:

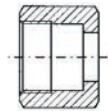
Complete assembly:
Ref. Number



nipple:



nut:



gasket:



WHEN YOU HAVE DEFINED THE CORRESPONDING REFERENCE, PLEASE DO NOT FORGET TO ADD THE REQUESTED MATERIAL:

EXAMPLE:

- 1) Complete Assembly
Cylinder valve connection: CGA 632
End connection: BW 1/4"
- 2) Nipple material : AOD VAR
- 3) Gasket material: Nickel

Final Reference for your order : 40 - 632 - 4BW - V - Ni



Note:

The surface finish is standard depending on the connection types
Other surface finish requirements are available upon request such as for instance RA 0,4 non-electropolished (passivated)

GASES / NORMS ASSIGNMENT TABLE*

Gas		UHP CGA/DISS	CGA	BS	DIN	AFNOR	JIS
Ammonia	NH ₃	720	660	10	6	C	22-R
Argon	Ar	718	580	3	6	C	22/23-R
Arsenic Pentafluoride	As ₂ F ₅	642					
Arsine	AsH ₃	632	350	4	1	E	22-L
Boron Trichloride	BCl ₃	634	660	14	8	J	22-L
Boron Trifluoride	BF ₃	642	330	14	8	J	22-L
Bromochlorodifluoromethane	BrCClF ₂	660	660	6	6	C	
Bromotrifluoromethane	BrCF ₃	660	660	6	6	C	
Butane	C ₄ H ₁₀		510	9	1	E	23-L
Carbon Dioxide	CO ₂	716	320	8	6	C	
Carbon Monoxide	CO	724	350	4	5	E	22-L
Carbonyl Sulfide	COS		330			E	
Chlorine	Cl	728	660	6,14	8	J	26-R
Chlorine Trifluoride	ClF ₃		670	6		P	26-L
Chlorodifluoromethane	CClF ₂ H		660	6	6	C	
Chlorotrifluoromethane	CClF ₃		660		6	C	
Diborane	B ₂ H ₆	632	350	4			22-L
Dichlorodifluoromethane	CCl ₂ F ₂	716	660	6	6	C	
Dichlorofluoromethane	CCl ₂ FH		660	6	6	C	
Dichlorosilane	H ₂ SiCl ₂	636	678	15	5		
Dichlorotetrafluoroethane	C ₂ Cl ₂ F ₄		660	6	6	C	
Diethylzinc	(C ₂ H ₅) ₂ Zn	726	510				
1,1-Difluoroethylene	C ₂ F ₂ H ₂		350		1	E	22-L
Dimethylzinc	(CH ₃) ₂ Zn	726					
Dimethylamine	C ₂ H ₇ N		705	11	1	E	22/26-L
Dimethylether	C ₂ H ₆ O		510		1	E	26-L
Disilane	Si ₂ H ₆		632			E	
Ethane	C ₂ H ₆		350		1	E	22-L
Ethyl Chloride	C ₂ H ₅ Cl		300	7,17	1	E	26-L
Ethylene	C ₂ H ₄		350	2	1	E	22-L
Fluorine	F ₂		679		8	F	22-R
Germane	GeH ₄	632	350			E	
Halocarbons **	/	716	660	6	6	C	
Helium	He	718	326	3	6	C	22/23 R
Hydrogen	H ₂	724	350	4	1	E	22-L
Hydrogen Bromide	HBr	634	330		8	K	26-L
Hydrogen Chloride	HCl	634	330		8	K	22-L
Hydrogen Fluoride	HF	638	660	6		K	22-R
Hydrogen Iodide	HI	670	330			K	
Hydrogen Selenide	H ₂ Se	632	330	4	5	E	
Hydrogen Sulfide	H ₂ S	722	350	15	5	E	
Isobutane	C ₄ H ₁₀		510	2	1,2,4	E	
Isobutylene	C ₄ H ₈		510	2	1	E	23-L
Krypton	Kr	718	510	3	6	C	22/23-R
Neon	Ne	718	580	3	6	C	22-23-R
Nitrogen	N ₂	718	580	3	10	C	22-23-R
Nitrous Oxide	N ₂ O	712	580	13	11	G	
Oxygen	O ₂	714	740	3	9	F	22/23-R
Perfluoropropane	C ₃ F ₈	716	660				
Phosgene	CCl ₂ O		660	6,14	8	K	26-R
Phosphine	PH ₃	632	350	4	1	E	
Phosphorus Pentafluoride	PF ₅	642	330				
Silane	SiH ₄	632	350	3	1	E	
Silicon Tetrachloride	SiCl ₄	636		Compression Fittings			
Silicon Tetrafluoride	SiF ₄	642	330	6	8		
Sulphur Dioxide	SO ₂	660	10,16	7	K	26-R	
Sulphur Hexafluoride	SF ₆	716	326	6	6	C	
Trichlorosilane	HSiCl ₃		636				
1,1,1-Trichlorotrifluoroethane	C ₂ Cl ₃ F ₃	716	660				
Trichlorofluoromethane	CCl ₃ F		660				
Triethylaluminium	AlC ₂ H ₅ ₃	726	510				
Trifluoromethane	CF ₃ H		660				
Trimethylamine	C ₃ H ₉ N		705	11	1	E	26-L
Tungsten Hexafluoride	WF ₆	638	670		8	J	
Vinyl Bromide	BrC ₂ H ₃		510		1	E	26-L
Vinyl Chloride	C ₂ H ₃ Cl		510	7	1	E	26-L
Vinyl Fluoride	C ₂ H ₃ F		350		1	E	22-L
Xenon	Xe	718	580	3	6	C	22/26-L

* This list is non exhaustive and for your information only Source: CGA V 1 1994, BS 341 Part 1 1991, DIN 477 Teil 1, AFNOR NF E 29 - 650, JIS (Jap.) B 8246 1996

** Halocarbon CF4 14: CGA 320 or 580

8 INTRODUCTION

STANDARD FEATURES CGA/DISS, DIN, BS, AFNOR, JIS | UHP

INLET CONNECTORS

- 316L/316 L AOD VAR/HASTELLOY®
- CGA DISS NON ROTATING SYSTEM
- 3 STAR PROCESS



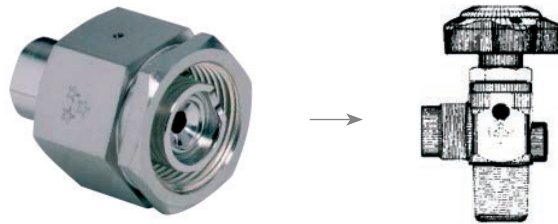
ADAPTORS

- 316 L SS
- CGA DISS NON ROTATING SYSTEM
- 3 STAR PROCESS



CYLINDER VALVE OUTLET SEAL CAPS

- 316 L SS
- CGA DISS NON ROTATING SYSTEM
- NICKEL GASKET, RING AND CHAIN INCLUDED
- DELIVERED WITH OR WITHOUT A CHAIN



GASKETS

MATERIAL:

- 316 L SILVER PLATED (option on request)
- NICKEL (standard)
- PCTFE (standard)
- AL (option on request)



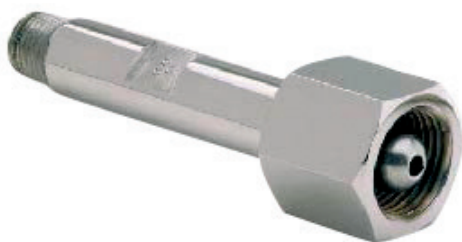
RETAINER RING:

- 316 L SS INCLUDED
- GASKETS IN ALUMINUM AVAILABLE UPON REQUEST
- GASKETS WITH FLOWRESTRICTORS AVAILABLE UPON REQUEST
- 3 STAR PROCESS

STANDARD FEATURES CGA/DISS, DIN, BS, AFNOR, JIS | HP

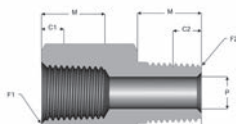
NIPPLES/NUTS

- 316 L SS
- BRASS
- 3 STAR PROCESS



ADAPTORS

- 316 L SS
- BRASS



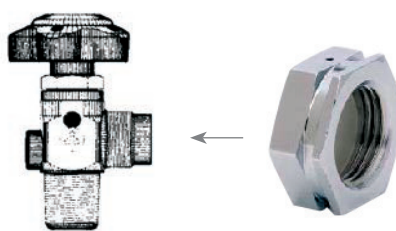
CONNECTORS BLANK PLUG/CAP

- STAINLESS STEEL SILVER PLATED
- DUAL LEAK TEST PORTS



CYLINDER VALVE OUTLET SEAL CAPS

- 303/316 L SS
- VARIOUS SEALING DISC MATERIAL
- CHAIN AND RING. STAINLESS STEEL
- DELIVERED WITH OR WITHOUT A CHAIN



GASKETS/WASHERS

MATERIAL:

- PCTFE
- PVDF
- PTFE (option on request)

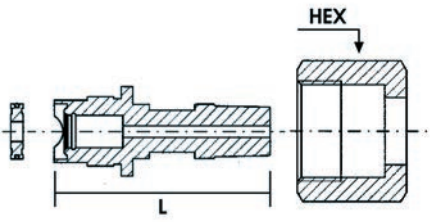


STANDARD CONNECTORS | CGA/DISS

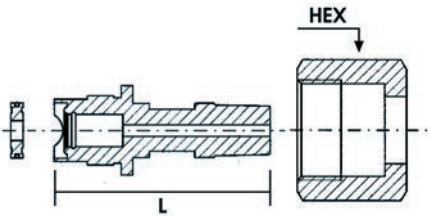
DISS/CGA V-1 Ref. Number	End Connection	Ref Number Nipple, Nut, Gasket	Length (L)	Internal Surface Finish μm (μinch)	Ref Number Nipple	Ref Number Nut	HEX Nut	Ref Number Gasket (Material)		Nipple Available Material			
								Nickel	PCTFE	S	V	N	H
632	BW 1/4"	40-632-4BW-	2 - 1/2"	Ra 0.2 (8 Ra) EP	10-632-4BW-					0	•	×	×
	FS 1/4"	40-632-4FS-	3"	Ra 0.2 (8 Ra) EP	10-632-4FS-	20-632-N-	1.1/4"	30-NI-0	30-PC-0	0	•	×	×
	NPT 1/4"	40-632-4N-	3"	Ra 0.4 (16 Ra) EP	10-632-4N-					•	0	×	×
634	BW 1/4"	40-634-4BW-	2 - 1/2"	Ra 0.2 (8 Ra) EP	10-634-4BW-					0	•	×	×
	FS 1/4"	40-634-4BW-	3"	Ra 0.2 (8 Ra) EP	10-634-4FS-	20-632-N-	1.1/4"	30-NI-0	30-PC-0	0	•	×	×
	NPT 1/4"	40-634-4BW-	3"	Ra 0.4 (16 Ra) EP	10-634-4N-					•	0	×	×
636	BW 1/4"	40-636-4BW-	2 - 1/2"	Ra 0.2 (8 Ra) EP	10-636-4BW-					0	•	×	×
	FS 1/4"	40-636-4BW-	3"	Ra 0.2 (8 Ra) EP	10-636-4FS-	20-632-N-	1.1/4"	30-NI-0	30-PC-0	0	•	×	×
	NPT 1/4"	40-636-4BW-	3"	Ra 0.4 (16 Ra) EP	10-636-4N-					•	0	×	×
638	BW 1/4"	40-638-4BW-	2 - 1/2"	Ra 0.2 (8 Ra) EP	10-638-4BW-					0	•	×	×
	FS 1/4"	40-638-4BW-	3"	Ra 0.2 (8 Ra) EP	10-638-4FS-	20-632-N-	1.1/4"	30-NI-0	30-PC-0	0	•	×	×
	NPT 1/4"	40-638-4BW-	3"	Ra 0.4 (16 Ra) EP	10-638-4N-					•	0	×	×
640	BW 1/4"	40-640-4BW-	2 - 1/2"	Ra 0.2 (8 Ra) EP	10-640-4BW-					0	•	×	×
	FS 1/4"	40-640-4BW-	3"	Ra 0.2 (8 Ra) EP	10-640-4FS-	20-632-N-	1.1/4"	30-NI-0	30-PC-0	0	•	×	×
	NPT 1/4"	40-640-4BW-	3"	Ra 0.4 (16 Ra) EP	10-640-4N-					•	0	×	×
712	BW 1/4"	40-712-4BW-	2 - 1/2"	Ra 0.2 (8 Ra) EP	10-712-4BW-					0	•	×	×
	FS 1/4"	40-712-4BW-	3"	Ra 0.2 (8 Ra) EP	10-712-4FS-	20-632-N-	1.3/8"	30-NI-0	30-PC-0	0	•	×	×
	NPT 1/4"	40-712-4BW-	3"	Ra 0.4 (16 Ra) EP	10-712-4N-					•	0	×	×
714	BW 1/4"	40-714-4BW-	2 - 1/2"	Ra 0.2 (8 Ra) EP	10-714-4BW-					0	•	×	×
	FS 1/4"	40-714-4BW-	3"	Ra 0.2 (8 Ra) EP	10-714-4FS-	20-632-N-	1.3/8"	30-NI-0	30-PC-0	0	•	×	×
	NPT 1/4"	40-714-4BW-	3"	Ra 0.4 (16 Ra) EP	10-714-4N-					•	0	×	×
716	BW 1/4"	40-716-4BW-	2 - 1/2"	Ra 0.2 (8 Ra) EP	10-716-4BW-					0	•	×	×
	FS 1/4"	40-716-4BW-	3"	Ra 0.2 (8 Ra) EP	10-716-4FS-	20-632-N-	1.3/8"	30-NI-0	30-PC-0	0	•	×	×
	NPT 1/4"	40-716-4BW-	3"	Ra 0.4 (16 Ra) EP	10-716-4N-					•	0	×	×
718	BW 1/4"	40-718-4BW-	2 - 1/2"	Ra 0.2 (8 Ra) EP	10-718-4BW-					0	•	×	×
	FS 1/4"	40-718-4BW-	3"	Ra 0.2 (8 Ra) EP	10-718-4FS-	20-632-N-	1.3/8"	30-NI-0	30-PC-0	0	•	×	×
	NPT 1/4"	40-718-4BW-	3"	Ra 0.4 (16 Ra) EP	10-718-4N-					•	0	×	×
720	BW 1/4"	40-720-4BW-	2 - 1/2"	Ra 0.2 (8 Ra) EP	10-720-4BW-					0	•	×	×
	FS 1/4"	40-720-4BW-	3"	Ra 0.2 (8 Ra) EP	10-720-4FS-	20-632-N-	1.3/8"	30-NI-0	30-PC-0	0	•	×	×
	NPT 1/4"	40-720-4BW-	3"	Ra 0.4 (16 Ra) EP	10-720-4N-					•	0	×	×
722	BW 1/4"	40-722-4BW-	2 - 1/2"	Ra 0.2 (8 Ra) EP	10-722-4BW-					0	•	×	×
	FS 1/4"	40-722-4BW-	3"	Ra 0.2 (8 Ra) EP	10-722-4FS-	20-632-N-	1.3/8"	30-NI-0	30-PC-0	0	•	×	×
	NPT 1/4"	40-722-4BW-	3"	Ra 0.4 (16 Ra) EP	10-722-4N-					•	0	×	×
724	BW 1/4"	40-724-4BW-	2 - 1/2"	Ra 0.2 (8 Ra) EP	10-724-4BW-					0	•	×	×
	FS 1/4"	40-724-4BW-	3"	Ra 0.2 (8 Ra) EP	10-724-4FS-	20-632-N-	1.3/8"	30-NI-0	30-PC-0	0	•	×	×
	NPT 1/4"	40-724-4BW-	3"	Ra 0.4 (16 Ra) EP	10-724-4N-					•	0	×	×
726	BW 1/4"	40-726-4BW-	2 - 1/2"	Ra 0.2 (8 Ra) EP	10-726-4BW-					0	•	×	×
	FS 1/4"	40-726-4BW-	3"	Ra 0.2 (8 Ra) EP	10-726-4FS-	20-632-N-	1.3/8"	30-NI-0	30-PC-0	0	•	×	×
	NPT 1/4"	40-726-4BW-	3"	Ra 0.4 (16 Ra) EP	10-726-4N-					•	0	×	×
728	BW 1/4"	40-728-4BW-	2 - 1/2"	Ra 0.2 (8 Ra) EP	10-728-4BW-					0	•	×	×
	FS 1/4"	40-728-4BW-	3"	Ra 0.2 (8 Ra) EP	10-728-4FS-	20-632-N-	1.3/8"	30-NI-0	30-PC-0	0	•	×	×
	NPT 1/4"	40-728-4BW-	3"	Ra 0.4 (16 Ra) EP	10-728-4N-					•	0	×	×

• = available
o = on request
× = not available

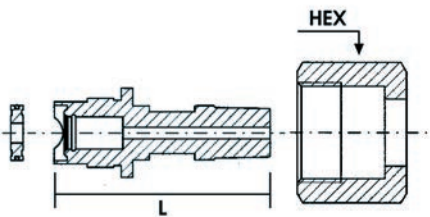
BUTT WELD



FACE SEAL



NPT



STANDARD ADAPTORS & BLANK PLUGS | CGA/DISS

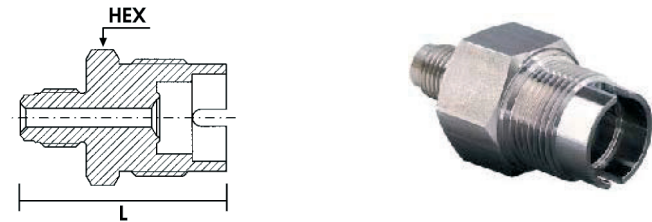
CGA V-1 Ref. Number	End Connection	Ref Number	Length (L)	HEX Nut	Internal Surface	Nipple Available Material			
						Adaptor Blank Plug/Cap	Finish μm (μinch)	S	V
632	Blank Plug	50-632-4BW-__	1.5"	1.1/8"	Ra 0.2 (8 Ra) EP	•	o	×	×
	FS 1/4"	60-632-4FS-__	2"		Ra 0.2 (8 Ra) EP	•	o	×	×
	NPT 1/4"	60-632-4N-__	1.8"		Ra 0.4 (16 Ra) EP	•	o	×	×
634	Blank Plug	50-634-4BW-__	1.5"	1.1/8"	Ra 0.2 (8 Ra) EP	•	o	×	×
	FS 1/4"	60-634-4BW-__	2"		Ra 0.2 (8 Ra) EP	•	o	×	×
	NPT 1/4"	60-634-4BW-__	1.8"		Ra 0.4 (16 Ra) EP	•	o	×	×
636	Blank Plug	50-636-4BW-__	1.5"	1.1/8"	Ra 0.2 (8 Ra) EP	•	o	×	×
	FS 1/4"	60-636-4BW-__	2"		Ra 0.2 (8 Ra) EP	•	o	×	×
	NPT 1/4"	60-636-4BW-__	1.8"		Ra 0.4 (16 Ra) EP	•	o	×	×
638	Blank Plug	50-638-4BW-__	1.5"	1.1/8"	Ra 0.2 (8 Ra) EP	•	o	×	×
	FS 1/4"	60-638-4BW-__	2"		Ra 0.2 (8 Ra) EP	•	o	×	×
	NPT 1/4"	60-638-4BW-__	1.8"		Ra 0.4 (16 Ra) EP	•	o	×	×
640	Blank Plug	50-640-4BW-__	1.5"	1.1/8"	Ra 0.2 (8 Ra) EP	•	o	×	×
	FS 1/4"	60-640-4BW-__	2"		Ra 0.2 (8 Ra) EP	•	o	×	×
	NPT 1/4"	60-640-4BW-__	1.8"		Ra 0.4 (16 Ra) EP	•	o	×	×
712	Blank Plug	50-712-4BW-__	1.5"	1.1/4"	Ra 0.2 (8 Ra) EP	•	o	×	×
	FS 1/4"	60-712-4BW-__	2"		Ra 0.2 (8 Ra) EP	•	o	×	×
	NPT 1/4"	60-712-4BW-__	1.8"		Ra 0.4 (16 Ra) EP	•	o	×	×
714	Blank Plug	50-714-4BW-__	1.5"	1.1/4"	Ra 0.2 (8 Ra) EP	•	o	×	×
	FS 1/4"	60-714-4BW-__	2"		Ra 0.2 (8 Ra) EP	•	o	×	×
	NPT 1/4"	60-714-4BW-__	1.8"		Ra 0.4 (16 Ra) EP	•	o	×	×
716	Blank Plug	50-716-4BW-__	1.5"	1.1/4"	Ra 0.2 (8 Ra) EP	•	o	×	×
	FS 1/4"	60-716-4BW-__	2"		Ra 0.2 (8 Ra) EP	•	o	×	×
	NPT 1/4"	60-716-4BW-__	1.8"		Ra 0.4 (16 Ra) EP	•	o	×	×
718	BW 1/4"	50-718-4BW-__	1.5"	1.1/4"	Ra 0.2 (8 Ra) EP	•	o	×	×
	FS 1/4"	60-718-4BW-__	2"		Ra 0.2 (8 Ra) EP	•	o	×	×
	NPT 1/4"	60-718-4BW-__	1.8"		Ra 0.4 (16 Ra) EP	•	o	×	×
720	Blank Plug	50-720-4BW-__	1.5"	1.1/4"	Ra 0.2 (8 Ra) EP	•	o	×	×
	FS 1/4"	60-720-4BW-__	2"		Ra 0.2 (8 Ra) EP	•	o	×	×
	NPT 1/4"	60-720-4BW-__	1.8"		Ra 0.4 (16 Ra) EP	•	o	×	×
722	Blank Plug	50-722-4BW-__	1.5"	1.1/4"	Ra 0.2 (8 Ra) EP	•	o	×	×
	FS 1/4"	60-722-4BW-__	2"		Ra 0.2 (8 Ra) EP	•	o	×	×
	NPT 1/4"	60-722-4BW-__	1.8"		Ra 0.4 (16 Ra) EP	•	o	×	×
724	Blank Plug	50-724-4BW-__	1.5"	1.1/4"	Ra 0.2 (8 Ra) EP	•	o	×	×
	FS 1/4"	60-724-4BW-__	2"		Ra 0.2 (8 Ra) EP	•	o	×	×
	NPT 1/4"	60-724-4BW-__	1.8"		Ra 0.4 (16 Ra) EP	•	o	×	×
726	Blank Plug	50-726-4BW-__	1.5"	1.1/4"	Ra 0.2 (8 Ra) EP	•	o	×	×
	FS 1/4"	60-726-4BW-__	2"		Ra 0.2 (8 Ra) EP	•	o	×	×
	NPT 1/4"	60-726-4BW-__	1.8"		Ra 0.4 (16 Ra) EP	•	o	×	×
728	Blank Plug	50-728-4BW-__	1.5"	1.1/4"	Ra 0.2 (8 Ra) EP	•	o	×	×
	FS 1/4"	60-728-4BW-__	2"		Ra 0.2 (8 Ra) EP	•	o	×	×
	NPT 1/4"	60-728-4BW-__	1.8"		Ra 0.4 (16 Ra) EP	•	o	×	×

• = available
o = on request
× = not available

CONNECTORS BLANK PLUGS/CAPS



FACE SEAL



NPT



CYLINDER VALVES GASKETS & OUTLET SEAL CAPS



Fig. 1

CGA V-1 Ref. Number	Ref. Number	Material
630	30-NI-0	Nickel
710	30-PC-0	PCTFE

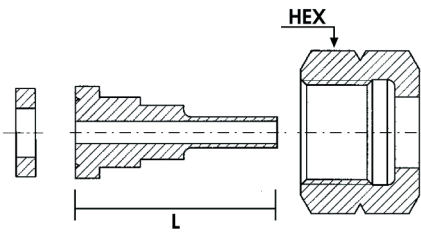
CGA V-1 Ref. Number	End Connection	Ref. Number	HEX	Fig	S303	S316
630	Outlet Cap	70-630-OC	1.1/4"	1	•	•
710	Outlet Cap	70-630-OC	1.3/8"	1	•	•

STANDARD INLET CONNECTORS | CGA

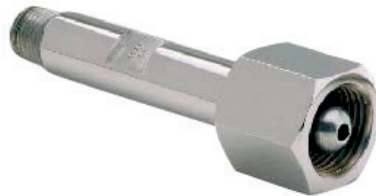
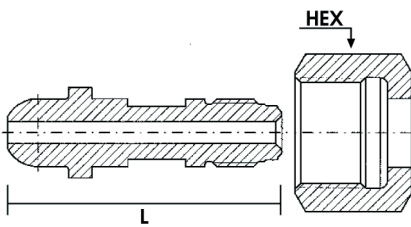
CGA V-1 Ref. Number	End Connection	Ref Number Nipple, Nut, Gasket	Length (L)	Internal Surface Finish μm (μinch)	Ref Number Nipple	Ref Number Nut	HEX Nut	Ref Number Gasket (Material)	Ref Number Gasket (Material)	Ref Number Gasket (Material)	Nipple Available Material				
						Stainless steel only		PCDF	PCTFE	MM	S	V	N	H	B
170	BW 1/4"	40-170-4BW-	1-1/4"	Ra 0.2 (8 Ra) EP	10-170-4BW-	20-170-N-	1/16"	30-PV-1	30-PC-1		0	•	×	×	×
	NPT 1/4"	40-170-4N-	1-1/4"	Ra 0.8 (32 Ra)	10-170-4N-						•	×	×	×	•
180	BW 1/4"	40-180-4BW-	1-1/4"	Ra 0.2 (8 Ra) EP	10-180-4BW-	20-180-N-	3/4"	30-PV-2	30-PC-2		0	•	×	×	×
	NPT 1/4"	40-180-4N-	1-1/4"	Ra 0.8 (32 Ra)	10-180-4N-						•	×	×	×	•
290	BW 1/4"	40-290-4BW-	2-5/8"	Ra 0.2 (8 Ra) EP	10-290-4BW-	20-290-N-	1"			Metal to Metal sealing (No Gasket)	0	•	×	×	×
	NPT 1/4"	40-290-4N-	2-1/4"	Ra 0.8 (32 Ra)	10-290-4N-						•	×	×	×	•
296	BW 1/4"	40-296-4BW-	2-5/8"	Ra 0.2 (8 Ra) EP	10-296-4BW-	20-296-P-	7/8"			Metal to Metal sealing (No Gasket)	0	•	×	×	×
	FS 1/4"	40-296-4FS-	2-3/4"	Ra 0.2 (8 Ra) EP	10-296-4FS-						0	•	×	×	×
	NPT 1/4"	40-296-4N-	3-1/2"	Ra 0.8 (32 Ra)	10-296-4N-						•	×	×	×	•
320	BW 1/4"	40-320-4BW-	1-3/4"	Ra 0.2 (8 Ra) EP	10-320-4BW-	20-320-N-	1.1/8"	30-PV-3	30-PC-3		0	•	×	×	×
	FS 1/4"	40-320-4FS-	1-3/4"	Ra 0.2 (8 Ra) EP	10-320-4FS-						0	•	×	×	×
	NPT 1/4"	40-320-4N-	2-1/2"	Ra 0.8 (32 Ra)	10-320-4N-						•	×	×	×	•
326	BW 1/4"	40-326-4BW-	2-1/4"	Ra 0.2 (8 Ra) EP	10-326-4BW-	20-326-N-	1.1/8"			Metal to Metal sealing (No Gasket)	0	•	×	×	×
	FS 1/4"	40-326-4FS-	2-1/4"	Ra 0.2 (8 Ra) EP	10-326-4FS-						0	•	×	×	×
	NPT 1/4"	40-326-4N-	3"	Ra 0.8 (32 Ra)	10-326-4N-						•	×	×	×	•
330	BW 1/4"	40-330-4BW-	1-3/4"	Ra 0.2 (8 Ra) EP	10-330-4BW-	20-330-N-	1.1/8"	30-PV-3	30-PC-3		0	•	×	×	×
	FS 1/4"	40-330-4FS-	1-3/4"	Ra 0.2 (8 Ra) EP	10-330-4FS-						0	•	×	×	×
	NPT 1/4"	40-330-4N-	2-1/2"	Ra 0.8 (32 Ra)	10-330-4N-						•	×	×	×	•
346	BW 1/4"	40-346-4BW-	2-5/16"	Ra 0.2 (8 Ra) EP	10-346-4BW-	20-346-N-	1.1/8"			Metal to Metal sealing (No Gasket)	0	•	×	×	×
	FS 1/4"	40-346-4FS-	2-1/4"	Ra 0.2 (8 Ra) EP	10-346-4FS-						0	•	×	×	×
	NPT 1/4"	40-346-4N-	3"	Ra 0.8 (32 Ra)	10-346-4N-						•	×	×	×	•
350	BW 1/4"	40-350-4BW-	2-5/16"	Ra 0.2 (8 Ra) EP	10-350-4BW-	20-350-4N-	1.1/8"			Metal to Metal sealing (No Gasket)	0	•	×	×	×
	FS 1/4"	40-350-4FS-	2-1/4"	Ra 0.2 (8 Ra) EP	10-350-4FS-						0	•	×	×	×
	NPT 1/4"	40-350-4N-	3"	Ra 0.8 (32 Ra)	10-350-4N-						•	×	×	×	•
510	BW 1/4"	40-510-4BW-	3"	Ra 0.2 (8 Ra) EP	10-510-4BW-	20-510-P-	1.1/8"			Metal to Metal sealing (No Gasket)	0	•	×	×	×
	FS 1/4"	40-510-4FS-	2-3/4"	Ra 0.2 (8 Ra) EP	10-510-4FS-						0	•	×	×	×
	NPT 1/4"	40-510-4N-	3-1/2"	Ra 0.8 (32 Ra)	10-510-4N-						•	×	×	×	•
540	BW 1/4"	40-540-4BW-	2-1/4"	Ra 0.2 (8 Ra) EP	10-510-4BW-	20-540-N-	1.1/8"			Metal to Metal sealing (No Gasket)	0	•	×	×	×
	FS 1/4"	40-540-4FS-	2-1/4"	Ra 0.2 (8 Ra) EP	10-510-4FS-						0	•	×	×	×
	NPT 1/4"	40-540-4N-	3"	Ra 0.8 (32 Ra)	10-510-4N-						•	×	×	×	•
580	BW 1/4"	40-580-4BW-	2-5/8"	Ra 0.2 (8 Ra) EP	10-580-4BW-	20-580-P-	1.1/8"			Metal to Metal sealing (No Gasket)	0	•	×	×	×
	FS 1/4"	40-580-4FS-	2-3/4"	Ra 0.2 (8 Ra) EP	10-580-4FS-						0	•	×	×	×
	NPT 1/4"	40-580-4N-	3-1/2"	Ra 0.8 (32 Ra)	10-580-4N-						•	×	×	×	•
590	BW 1/4"	40-590-4BW-	2-5/8"	Ra 0.2 (8 Ra) EP	10-590-4BW-	20-590-P-	1.1/4"			Metal to Metal sealing (No Gasket)	0	•	×	×	×
	FS 1/4"	40-590-4FS-	2-3/4"	Ra 0.2 (8 Ra) EP	10-590-4FS-						0	•	×	×	×
	NPT 1/4"	40-590-4N-	3-1/2"	Ra 0.8 (32 Ra)	10-590-4N-						•	×	×	×	•
660	BW 1/4"	40-660-4BW-	2-3/16"	Ra 0.2 (8 Ra) EP	10-660-4BW-	20-660-N-	1.1/4"	30-PV-4	30-PC-4		0	•	0	0	×
	FS 1/4"	40-660-4FS-	2-7/8"	Ra 0.2 (8 Ra) EP	10-660-4FS-						0	•	0	0	×
	NPT 1/4"	40-660-4N-	2-5/8"	Ra 0.8 (32 Ra)	10-660-4N-						•	×	0	0	•
670	BW 1/4"	40-670-4BW-	2-3/16"	Ra 0.2 (8 Ra) EP	10-670-4BW-	20-670-N-	1.1/4"	30-PV-4	30-PC-4		0	•	0	0	×
	FS 1/4"	40-670-4FS-	1-7/8"	Ra 0.2 (8 Ra) EP	10-670-4FS-						0	•	0	0	×
	NPT 1/4"	40-670-4N-	2-5/8"	Ra 0.8 (32 Ra)	10-670-4N-						•	×	0	0	•
677	BW 1/4"	40-677-4BW-	2"	Ra 0.2 (8 Ra) EP	10-677-4BW-	20-677-N-	1.1/4"			Metal to Metal sealing (No Gasket)	0	•	0	0	×
	FS 1/4"	40-677-4FS-	1-7/8"	Ra 0.2 (8 Ra) EP	10-677-4FS-						0	•	0	0	×
	NPT 1/4"	40-677-4N-	2-3/8"	Ra 0.8 (32 Ra)	10-677-4N-						•	×	0	0	•
678	BW 1/4"	40-678-4BW-	2-1/2"	Ra 0.2 (8 Ra) EP	10-678-4BW-	20-678-N-	1.1/4"	30-PV-5	30-PC-5		0	•	0	0	×
	FS 1/4"	40-678-4FS-	2"	Ra 0.2 (8 Ra) EP	10-678-4FS-						0	•	0	0	×
	NPT 1/4"	40-678-4N-	2-3/8"	Ra 0.8 (32 Ra)	10-678-4N-						•	×	0	0	•
679	BW 1/4"	40-679-4BW-	2-1/2"	Ra 0.2 (8 Ra) EP	10-679-4BW-	20-679-N-	1.1/4"	30-PV-5	30-PC-5		0	•	0	0	×
	FS 1/4"	40-679-4FS-	2"	Ra 0.2 (8 Ra) EP	10-679-4FS-						0	•	0	0	×
	NPT 1/4"	40-679-4N-	3"	Ra 0.8 (32 Ra)	10-679-4N-						•	×	0	0	•

• = available
o = on request
× = not available

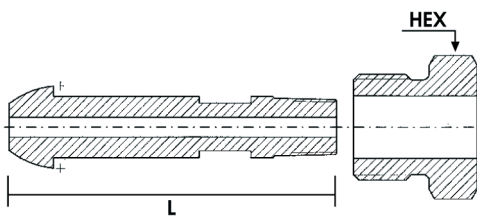
CGA 330/BUTT WELD



CGA 540/FACE SEAL



CGA 580/NPT

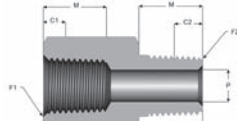
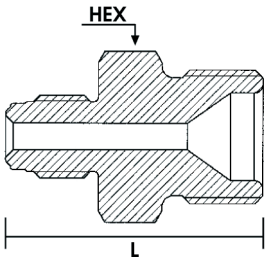


STANDARD ADAPTORS, BLANK PLUGS & CAPS | CGA

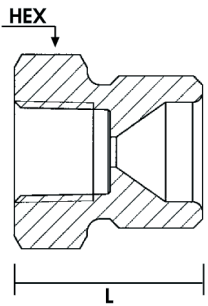
CGA V-1 Ref. Number	End Connection	Ref Number	Length (L)	HEX Nut	Internal Surface		Nipple Available Material				
					Finish μm (μinch)	S	V	N	H	H	
296	FS 1/4"	60-296-4FS-	2"	1.1/8"	Ra 0.2 (8 Ra) EP	•	×	×	×	×	
	NPT 1/4"	60-296-4N-	2"		Ra 0.8 (32 Ra) EP	•	×	×	×	•	
	Blank Plug	50-296-BC-	1.3/8"		-	•	×	×	×	•	
320	FS 1/4"	60-320-4FS-	1.3/4"	1"	Ra 0.2 (8 Ra) EP	•	×	×	×	×	
	NPT 1/4"	60-320-4N-	1.1/8"		Ra 0.8 (32 Ra) EP	•	×	×	×	•	
	Blank Plug	50-320-BP-	1.1/8"		-	•	0	×	×	•	
326	FS 1/4"	60-326-4FS-	1.3/4"	1"	Ra 0.2 (8 Ra) EP	•	×	×	×	×	
	NPT 1/4"	60-326-4N-	1.1/8"		Ra 0.8 32 Ra) EP	•	×	×	×	•	
	Blank Plug	50-326-BP-	1.1/8"		-	•	0	×	×	•	
330	FS 1/4"	60-330-4FS-	1.3/4"	1"	Ra 0.2 (8 Ra) EP	•	×	×	×	×	
	NPT 1/4"	60-330-4N-	1.1/8"		Ra 0.8 (32 Ra) EP	•	×	×	×	•	
	Blank Plug	50-330-BP-	1.1/8"		-	•	0	×	×	•	
346	FS 1/4"	60-346-4FS-	1.7/8"	1"	Ra 0.2 (8 Ra) EP	•	×	×	×	×	
	NPT 1/4"	60-346-4N-	1.3/8"		Ra 0.8 32 Ra) EP	•	×	×	×	0	
	Blank Plug	50-346-BP-	1.1/8"		-	•	0	×	×	0	
350	FS 1/4"	60-350-4FS-	1.7/8"	1"	Ra 0.2 (8 Ra) EP	•	×	×	×	×	
	NPT 1/4"	60-350-4N-	1.3/8"		Ra 0.8 (32 Ra) EP	•	×	×	×	•	
	Blank Plug	50-350-BP-	1.1/8"		-	•	0	×	×	•	
510	FS 1/4"	60-510-4FS-	2"	1.1/8"	Ra 0.2 (8 Ra) EP	•	×	×	×	×	
	NPT 1/4"	60-510-4N-	2"		Ra 0.8 32 Ra) EP	•	×	×	×	•	
	Blank Plug	50-510-BP-	1.3/8"		-	•	0	×	×	•	
540	FS 1/4"	60-540-4FS-	1.7/8"	1"	Ra 0.2 (8 Ra) EP	•	×	×	×	×	
	NPT 1/4"	60-540-4N-	1.1/2"		Ra 0.8 (32 Ra) EP	•	×	×	×	•	
	Blank Plug	50-540-BP-	1.1/8"		-	•	0	×	×	•	
580	FS 1/4"	60-580-4FS-	2"	1.1/4"	Ra 0.2 (8 Ra) EP	•	×	×	×	×	
	NPT 1/4"	60-580-4N-	2"		Ra 0.8 32 Ra) EP	•	×	×	×	•	
	Blank Plug	50-580-BP-	1.3/8"		-	•	0	×	×	•	
590	FS 1/4"	60-590-4FS-	2"	1.1/4"	Ra 0.2 (8 Ra) EP	•	×	×	×	×	
	NPT 1/4"	60-590-4N-	2"		Ra 0.8 (32 Ra) EP	•	×	×	×	•	
	Blank Plug	50-590-BP-	1.3/8"		-	•	0	×	×	•	
660	FS 1/4"	60-660-4FS-	1.1/2"	1.1/8"	Ra 0.2 (8 Ra) EP	•	×	0	0	×	
	NPT 1/4"	60-660-4N-	1.1/4"		Ra 0.8 32 Ra) EP	•	×	0	0	•	
	Blank Plug	50-660-BP-	7/8"		-	•	0	0	0	•	
670	FS 1/4"	60-670-4FS-	1.1/2"	1.1/8"	Ra 0.2 (8 Ra) EP	•	×	0	0	×	
	NPT 1/4"	60-670-4N-	1.1/4"		Ra 0.8 (32 Ra) EP	•	×	0	0	0	
	Blank Plug	50-670-BP-	7/8"		-	•	0	0	0	0	
677	FS 1/4"	60-677-4FS-	1.1/2"	1.1/8"	Ra 0.2 (8 Ra) EP	•	×	0	0	×	
	NPT 1/4"	60-677-4N-	1.3/8"		Ra 0.8 32 Ra) EP	•	×	0	0	•	
	Blank Plug	50-677-BP-	1"		-	•	0	0	0	•	
678	FS 1/4"	60-678-4FS-	1.1/2"	1.1/8"	Ra 0.2 (8 Ra) EP	•	×	0	0	×	
	NPT 1/4"	60-678-4N-	1.3/8"		Ra 0.8 (32 Ra) EP	•	×	0	0	0	
	Blank Plug	50-678-BP-	1"		-	•	0	0	0	0	
679	FS 1/4"	60-679-4FS-	1.3/4"	1.1/8"	Ra 0.2 (8 Ra) EP	•	×	0	0	×	
	NPT 1/4"	60-679-4N-	1.1/4"		Ra 0.8 32 Ra) EP	•	×	0	0	0	
	Blank Plug	50-679-BP-	7/8"		-	•	0	0	0	0	

• = available
 0 = on request
 × = not available

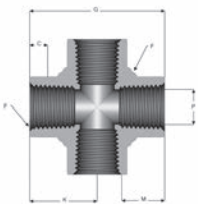
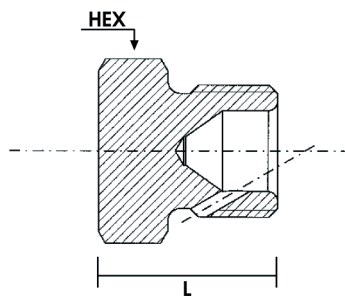
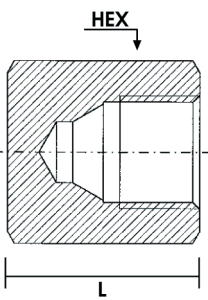
ADAPTORS FACE SEAL



ADAPTORS NPT



CONNECTORS BLANK CAPS

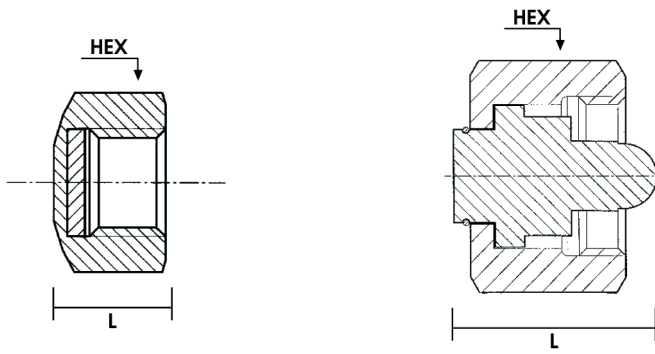


STANDARD CYLINDER VALVE OUTLET SEAL CAPS & PLUGS | CGA

CGA V-1 Ref. Number	End Connection	Ref Number	Length (L)	Fig.	S 303	S 316	B
		Outlet Seal Cap					
296	Outlet Plug	30-296-OP-__	•	3-4	•	×	•
320	Outlet Cap	30-320-OC-__	0.57"	1	•	×	•
326	Outlet Cap	30-326-OC-__	•	2	•	0	•
330	Outlet Cap	30-330-OC-__	0.57"	1	•	0	•
346	Outlet Cap	30-346-__	•	2	•	×	•
350	Outlet Cap	30-350-OC-__	•	•	2	0	•
510	Outlet Plug	30-510-OP-__	•	3-4	•	×	•
540	Outlet Cap	30-540-OC-__	•	2	•	×	•
580	Outlet Plug	30-580-OP-__	•	3-4	•	×	•
590	Outlet Plug	30-590-OP-__	•	3-4	•	×	•
660	Outlet Cap	30-660-OC-__	0.57	1	•	0	•
670	Outlet Cap	30-670-OC-__	0.57	1	•	0	•
677	Outlet Cap	30-677-OC-__	•	2	•	0	•
678	Outlet Cap	30-678-OC-__	•	2	•	0	•
679	Outlet Cap	30-679-OC-__	•	2	•	0	•

• = available
 0 = on request
 × = not available

CYLINDER VALVES OUTLET SEAL CAPS



CYLINDER VALVES OUTLET SEAL PLUGS

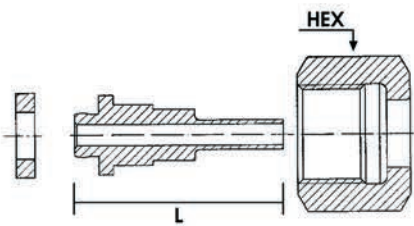


STANDARD INLET CONNECTORS | DIN

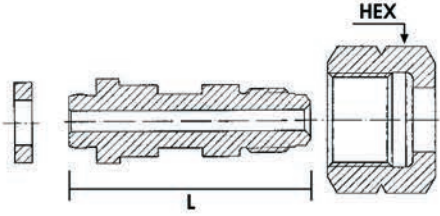
DIN 477 Ref. Number	End Connection	Ref Number Nipple, Nut, Gasket	Length (L)	Internal Surface Finish μm (μinch)	Ref Number Nipple	Ref Number Nut	HEX Nut	Ref Number Gasket (Material)	Ref Number Gasket (Material)	Nipple Available Material				
						Stainless steel only	PVDF	PCTFE	S	V	N	H	B	
1	BW 1/4"	40-DIN1-4BW-	70 (2.76")	Ra 0.2 (8 Ra) EP	10-DIN1-4BW-	20-DIN1-N-	30	30-PV-6	PCTFE	0	•	×	×	×
	FS 1/4"	40-DIN1-4FS-	70 (2.76")	Ra 0.2 (8 Ra) EP	10-DIN1-4FS-					0	•	×	×	×
	NPT 1/4"	40-DIN1-4N-	90 (3.54")	Ra 0.8 (32 Ra)	10-DIN1-4N-					•	0	×	×	•
5	BW 1/4"	40-DIN5-4BW-	67 (2.46")	Ra 0.2 (8 Ra) EP	10-DIN5-4BW-	20-DIN5-N-	32	30-PV-3	30-PC-6	0	•	×	×	×
	FS 1/4"	40-DIN5-4FS-	67 (2.46")	Ra 0.2 (8 Ra) EP	10-DIN5-4FS-					0	•	×	×	×
	NPT 1/4"	40-DIN5-4N-	87 (3.42")	Ra 0.8 (32 Ra)	10-DIN5-4N-					•	0	×	×	•
6	BW 1/4"	40-DIN6-4BW-	70 (2.76")	Ra 0.2 (8 Ra) EP	10-DIN6-4BW-	20-DIN6-N-	30	30-PV-6	30-PC-3	0	•	×	×	×
	FS 1/4"	40-DIN6-4FS-	70 (2.76")	Ra 0.2 (8 Ra) EP	10-DIN6-4FS-					0	•	×	×	×
	NPT 1/4"	40-DIN6-4N-	90 (3.54")	Ra 0.8 (32 Ra)	10-DIN6-4N-					•	0	×	×	•
7	BW 1/4"	40-DIN7-4BW-	70 (2.76")	Ra 0.2 (8 Ra) EP	10-DIN7-4BW-	20-DIN7-N-	30	30-PV-6	30-PC-6	0	•	×	×	×
	FS 1/4"	40-DIN7-4FS-	70 (2.76")	Ra 0.2 (8 Ra) EP	10-DIN7-4FS-					0	•	×	×	×
	NPT 1/4"	40-DIN7-4N-	90 (3.54")	Ra 0.8 (32 Ra)	10-DIN7-4N-					•	0	×	×	•
8	BW 1/4"	40-DIN8-4BW-	67 (2.46")	Ra 0.2 (8 Ra) EP	10-DIN8-4BW-	20-DIN8-4N-	32	30-PV-3	30-PC-6	0	•	×	×	×
	FS 1/4"	40-DIN8-4FS-	67 (2.46")	Ra 0.2 (8 Ra) EP	10-DIN8-4FS-					0	•	×	×	×
	NPT 1/4"	40-DIN8-4N-	87 (3.42")	Ra 0.8 (32 Ra)	10-DIN8-4N-					•	0	×	×	•
9	BW 1/4"	40-DIN9-4BW-	70 (2.76")	Ra 0.2 (8 Ra) EP	10-DIN9-4BW-	20-DIN9-N-	32	30-PV-6	30-PC-3	0	•	×	×	×
	FS 1/4"	40-DIN9-4FS-	70 (2.76")	Ra 0.2 (8 Ra) EP	10-DIN9-4FS-					0	•	×	×	×
	NPT 1/4"	40-DIN9-4N-	90 (3.54")	Ra 0.8 (32 Ra)	10-DIN9-4N-					•	0	×	×	•
10	BW 1/4"	40-DIN10-4BW-	70 (2.76")	Ra 0.2 (8 Ra) EP	10-DIN10-4BW-	20-DIN10-N-	32	30-PV-6	30-PC-6	0	•	×	×	×
	FS 1/4"	40-DIN10-4FS-	70 (2.76")	Ra 0.2 (8 Ra) EP	10-DIN10-4FS-					0	•	×	×	×
	NPT 1/4"	40-DIN10-4N-	90 (3.54")	Ra 0.8 (32 Ra)	10-DIN10-4N-					•	0	×	×	•
11	BW 1/4"	40-DIN11-4BW-	67 (2.46")	Ra 0.2 (8 Ra) EP	10-DIN11-4BW-	20-DIN11-N-	22	30-PV-7	30-PC-7	0	•	×	×	×
	FS 1/4"	40-DIN11-4FS-	67 (2.46")	Ra 0.2 (8 Ra) EP	10-DIN11-4FS-					0	•	×	×	×
	NPT 1/4"	40-DIN11-4N-	87 (3.42")	Ra 0.8 (32 Ra)	10-DIN11-4N-					•	0	×	×	•
13	BW 1/4"	40-DIN13-4BW-	68 (2.68")	Ra 0.2 (8 Ra) EP	10-DIN13-4BW-	20-DIN13-N-	27	30-PV-6	30-PC-6	0	•	×	×	×
	FS 1/4"	40-DIN13-4FS-	68 (2.68")	Ra 0.2 (8 Ra) EP	10-DIN13-4FS-					0	•	×	×	×
	NPT 1/4"	40-DIN13-4N-	88 (3.46")	Ra 0.8 (32 Ra)	10-DIN13-4N-					•	0	×	×	•
14	BW 1/4"	40-DIN14-4BW-	67 (2.46")	Ra 0.2 (8 Ra) EP	10-DIN14-4BW-	20-DIN14-N-	27	30-PV-7	30-PC-7	0	•	0	0	×
	FS 1/4"	40-DIN14-4FS-	67 (2.46")	Ra 0.2 (8 Ra) EP	10-DIN14-4FS-					0	•	0	0	×
	NPT 1/4"	40-DIN14-4N-	87 (3.42")	Ra 0.8 (32 Ra)	10-DIN14-4N-					•	0	0	0	•

• = available
 0 = on request
 × = not available

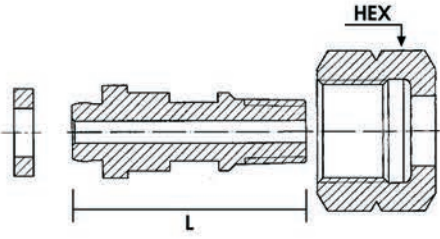
BUTT WELD



FACE SEAL



NPT

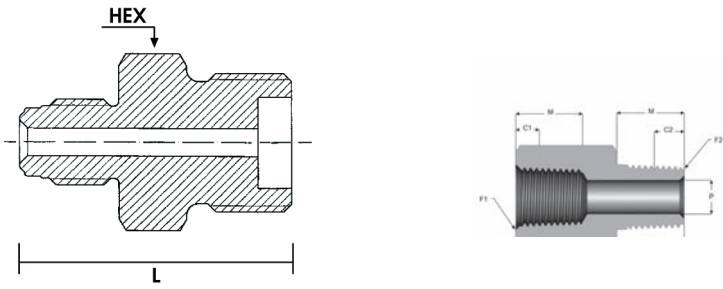


STANDARD ADAPTORS, BLANK PLUGS & CAPS | DIN

DIN 477 Ref. Number	End Connection	Ref Number Adaptor Blank Plug/Cap	Length (L) mm (inch)	Hex Blank Plug / Nut in mm	Internal Surface Finish μm (μinch)	Nipple Available Material				
						S	V	N	H	B
1	FS 1/4"	60-DIN1-4FS-	60 (2.36")	30	Ra 0.2 (8 Ra) EP	•	×	×	×	×
	NPT 1/4"	60-DIN1-4N-	60 (2.36")		Ra 0.8 (32 Ra)	•	×	×	×	•
	Blank Plug	50-DIN1-BP-	38 (1.5")		-	•	o	×	×	•
5	FS 1/4"	60-DIN5-4FS-	57 (2.24")	32	Ra 0.2 (8 Ra) EP	•	×	×	×	×
	NPT 1/4"	60-DIN5-4N-	57 (2.24")		Ra 0.8 (32 Ra)	•	×	×	×	•
	Blank Plug	50-DIN5-BP-	38 (1.5")		-	•	o	×	×	•
6	FS 1/4"	60-DIN6-4FS-	60 (2.36")	30	Ra 0.2 (8 Ra) EP	•	×	×	×	×
	NPT 1/4"	60-DIN6-4N-	60 (2.36")		Ra 0.8 (32 Ra)	•	×	×	×	•
	NPT 1/4"	50-DIN6-BP-	38 (1.5")		-	•	o	×	×	•
7	FS 1/4"	60-DIN7-4FS-	60 (2.36")	30	Ra 0.2 (8 Ra) EP	•	×	×	×	×
	NPT 1/4"	60-DIN7-4N-	60 (2.36")		Ra 0.8 (32 Ra)	•	×	×	×	•
	Blank Plug	50-DIN7-BP-	38 (1.5")		-	•	o	×	×	•
8	FS 1/4"	60-DIN8-4FS-	57 (2.24")	32	Ra 0.2 (8 Ra) EP	•	×	×	×	×
	NPT 1/4"	60-DIN8-4N-	57 (2.24")		Ra 0.8 (32 Ra)	•	×	×	×	•
	NPT 1/4"	50-DIN8-BP-	38 (1.5")		-	•	o	×	×	•
9	FS 1/4"	60-DIN9-4FS-	60 (2.36")	32	Ra 0.2 (8 Ra) EP	•	×	×	×	×
	NPT 1/4"	60-DIN9-4N-	60 (2.36")		Ra 0.8 (32 Ra)	•	×	×	×	•
	Blank Plug	50-DIN9-BP-	38 (1.5")		-	•	o	×	×	•
10	FS 1/4"	60-DIN10-4FS-	60 (2.36")	32	Ra 0.2 (8 Ra) EP	•	×	×	×	×
	NPT 1/4"	60-DIN10-4N-	60 (2.36")		Ra 0.8 (32 Ra)	•	×	×	×	•
	NPT 1/4"	50-DIN10-BP-	38 (1.5")		-	•	o	×	×	•
11	FS 1/4"	60-DIN11-4FS-	57 (2.24")	22	Ra 0.2 (8 Ra) EP	•	×	×	×	×
	NPT 1/4"	60-DIN11-4N-	57 (2.24")		Ra 0.8 (32 Ra)	•	×	×	×	•
	Blank Plug	50-DIN11-BP-	38 (1.5")		-	•	o	×	×	•
13	FS 1/4"	60-DIN13-4FS-	58 (2.27")	27	Ra 0.2 (8 Ra) EP	•	×	×	×	×
	NPT 1/4"	60-DIN13-4N-	58 (2.27")		Ra 0.8 (32 Ra)	•	×	×	×	•
	NPT 1/4"	50-DIN13-BP-	38 (1.5")		-	•	o	×	×	•
14	FS 1/4"	60-DIN14-4FS-	57 (2.24")	27	Ra 0.2 (8 Ra) EP	•	×	×	×	×
	NPT 1/4"	60-DIN14-4N-	57 (2.24")		Ra 0.8 (32 Ra)	•	×	×	×	•
	Blank Plug	50-DIN14-BP-	38 (1.5")		-	•	o	×	×	•

• = available
o = on request
× = not available

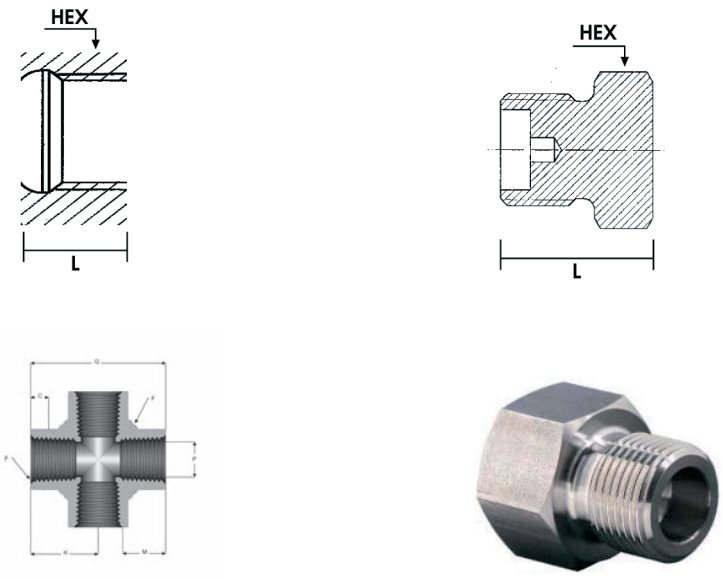
ADAPTORS FACE SEAL



ADAPTORS NPT



CONNECTORS BLANK CAPS

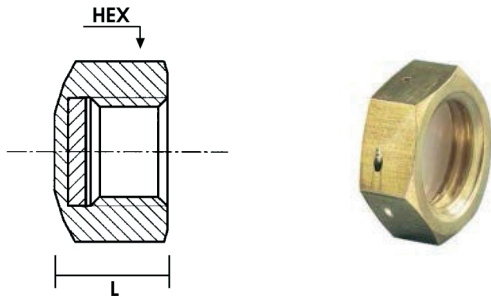


STANDARD CYLINDER VALVES OUTLET SEAL CAPS & PLUGS | DIN

DIN 477 Ref. Number	End Connection	Ref Number	Length (L)	HEX Outlet Seal Cap in mm	Fig.	S 303	S 316	B
		Outlet Seal Cap						
1	Outlet Plug	70-DIN1-OC_	14.4 (0.57")	30	1	•	0	•
5	Outlet Cap	70-DIN5-OC_	14.8 (0.58")	32	1	•	0	•
6	Outlet Cap	70-DIN6-OC_	14.4 (0.57")	30	1	•	0	•
7	Outlet Cap	10-DIN7-OC_	14.4 (0.57")	30	1	•	0	•
8	Outlet Cap	70-DIN8-OC_	14.8 (0.58")	32	1	•	0	•
9	Outlet Cap	70-DIN9-OC_	14.4 (0.57")	32	1	•	0	•
10	Outlet Plug	70-DIN10-OC_	14.4 (0.57")	32	1	•	0	•
11	Outlet Cap	70-DIN14-OC_	14.4 (0.57")	22	1	•	0	•
13	Outlet Plug	70-DIN13-OC_	14.4 (0.57")	27	1	•	0	•
14	Outlet Plug	70-DIN14-OC_	14.4 (0.57")	27	1	•	0	•

• = available
 0 = on request
 × = not available

CYLINDER OUTLET SEAL CAPS



CYLINDER OUTLET SEAL PLUGS

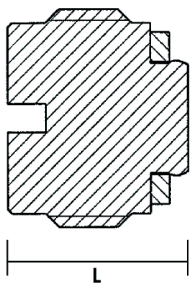


Fig. 2

STANDARD INLET CONNECTORS | BS

BS 341 Ref. Number	Ref Number Nipple, Nut, Gasket	Length (L)	Internal Surface Finish μm (μinch)	Ref Number Nipple	Ref Number Nut/Plug	HEX Nut/Plug in mm	Ref Number Gasket (Material)		Nipple Available Material				
							PVDF	PCTFE	S	V	N	H	B
2	40-BS2-4BW-	3"	Ra 0.2 (8 Ra) EP	10-BS2-4BW-	20-BS2-P-	24	Metal to Metal sealing	Metal to Metal sealing	0	•	×	×	×
	40-BS2-4FS-	3"	Ra 0.2 (8 Ra) EP	10-BS2-4FS-					0	•	×	×	×
	40-BS2-4N-	3 - 1/4"	Ra 0.8 (32 Ra)	10-BS2-4N-					•	0	×	×	•
3	40-BS3-4BW-	3"	Ra 0.2 (8 Ra) EP	10-BS3-4BW-	20-BS3-P-	24	Metal to Metal sealing	Metal to Metal sealing	0	•	×	×	×
	40-BS3-4FS-	3"	Ra 0.2 (8 Ra) EP	10-BS3-4FS-					0	•	×	×	×
	40-BS3-4N-	3 - 1/4"	Ra 0.8 (32 Ra)	10-BS3-4N-					•	0	×	×	•
4	40-BS4-4BW-		Ra 0.2 (8 Ra) EP	10-BS4-4BW-	20-BS4-P-	24	Metal to Metal sealing	Metal to Metal sealing	0	•	×	×	×
	40-BS4-4FS-		Ra 0.2 (8 Ra) EP	10-BS4-4FS-					0	•	×	×	×
	40-BS4-4N-	3 - 1/4"	Ra 0.8 (32 Ra)	10-BS4-4N-					•	0	×	×	•
6	40-BS6-4BW-	3 - 1/4"	Ra 0.2 (8 Ra) EP	10-BS6-4BW-	20-BS6-N-	32	30-PV-8	30-PC-8	0	•	×	×	×
	40-BS6-4FS-	3 - 1/4"	Ra 0.2 (8 Ra) EP	10-BS6-4FS-					0	•	×	×	×
	40-BS6-4N-	3 - 1/2"	Ra 0.8 (32 Ra)	10-BS6-4N-					•	0	×	×	•
7	40-BS7-4BW-	3 - 1/4"	Ra 0.2 (8 Ra) EP	10-BS7-4BW-	20-BS7-4N-	32	30-PV-8	30-PC-8	0	•	×	×	×
	40-BS7-4FS-	3 - 1/4"	Ra 0.2 (8 Ra) EP	10-BS7-4FS-					0	•	×	×	×
	40-BS7-4N-	3 - 1/2"	Ra 0.8 (32 Ra)	10-BS7-4N-					•	0	×	×	•
8	40-BS8-4BW-	2 - 1/2"	Ra 0.2 (8 Ra) EP	10-BS8-4BW-	20-BS8-N-	28	30-PV-9	30-PC-9	0	•	×	×	×
	40-BS8-4FS-	2 - 1/2"	Ra 0.2 (8 Ra) EP	10-BS8-4FS-					0	•	×	×	×
	40-BS8-4N-	2 - 3/4"	Ra 0.8 (32 Ra)	10-BS8-4N-					•	0	×	×	•
10	40-BS10-4BW-	3 - 3/8"	Ra 0.2 (8 Ra) EP	10-BS10-4BW-	20-BS10-N-	28	30-PV-6	30-PC-6	0	•	×	×	×
	40-BS10-4FS-	3 - 3/8"	Ra 0.2 (8 Ra) EP	10-BS10-4FS-					0	•	×	×	×
	40-BS10-4N-	3 - 5/8"	Ra 0.8 (32 Ra)	10-BS10-4N-					•	0	×	×	•
11	40-BS11-4BW-	3 - 3/8"	Ra 0.2 (8 Ra) EP	10-BS11-4BW-	20-BS11-N-	28	30-PV-6	30-PC-6	0	•	×	×	×
	40-BS11-4FS-	3 - 3/8"	Ra 0.2 (8 Ra) EP	10-BS11-4FS-					0	•	×	×	×
	40-BS11-4N-	3 - 5/8"	Ra 0.8 (32 Ra)	10-BS11-4N-					•	0	×	×	•
13	40-BS13-4BW-	3 - 3/8"	Ra 0.2 (8 Ra) EP	10-BS13-4BW-	20-BS13-N-	24	30-PV-10	30-PC-10	0	•	×	×	×
	40-BS13-4FS-	3 - 3/8"	Ra 0.2 (8 Ra) EP	10-BS13-4FS-					0	•	×	×	×
	40-BS13-4N-	3 - 5/8"	Ra 0.8 (32 Ra)	10-BS13-4N-					•	0	×	×	•
14	40-BS14-4BW-	2 - 5/8"	Ra 0.2 (8 Ra) EP	10-BS14-4BW-	20-BS14-N-	22	30-PV-11	30-PC-11	0	•	0	0	×
	40-BS14-4FS-	2 - 5/8"	Ra 0.2 (8 Ra) EP	10-BS14-4FS-					0	•	0	0	×
	40-BS14-4N-	2 - 7/8"	Ra 0.8 (32 Ra)	10-BS14-4N-					•	0	0	0	•
15	40-BS15-4BW-	2 - 5/8"	Ra 0.2 (8 Ra) EP	10-BS15-4BW-	20-BS15-N-	22	30-PV-11	30-PC-11	0	•	×	×	×
	40-BS15-4FS-	2 - 5/8"	Ra 0.2 (8 Ra) EP	10-BS15-4FS-					0	•	×	×	×
	40-BS15-4N-	2 - 7/8"	Ra 0.8 (32 Ra)	10-BS15-4N-					•	0	×	×	•
17	40-BS17-4BW-	2 - 1/2"	Ra 0.2 (8 Ra) EP	10-BS17-4BW-	20-BS17-N-	19	30-PV-12	30-PC-12	0	•	×	×	×
	40-BS17-4FS-	2 - 1/2"	Ra 0.2 (8 Ra) EP	10-BS17-4FS-					0	•	×	×	×
	40-BS17-4N-	2 - 3/4"	Ra 0.8 (32 Ra)	10-BS17-4N-					•	0	×	×	•

• = available
 0 = on request
 × = not available

STANDARD INLET CONNECTORS | BS (continued)

BUTT WELD



FACE SEAL



NPT



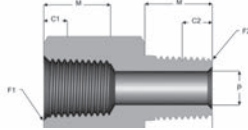
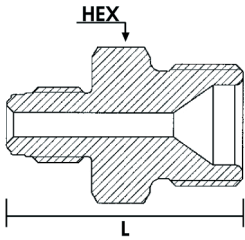
STANDARD ADAPTORS, BLANK PLUGS & CAPS | BS

BS 341 Ref. Number	End Connection	Ref Number Adaptor Blank Plug/Cap	Length (L)	Hex Blank Plug / Nut in mm	Internal Surface Finish μm (μinch)	Nipple Available Material				
						S	V	N	H	B
2	FS 1/4"	60-BS2-4FS-	3 - 3/8"	24	Ra 0.2 (8 Ra) EP	•	o	×	×	×
	NPT 1/4"	60-BS2-4N-	3 - 1/8"		Ra 0.8 (32 Ra)	•	o	×	×	×
	Blank Plug	50-BS2-BC-	1 - 1/2"		-	•	×	×	×	•
3	FS 1/4"	60-BS3-4FS-	3 - 3/8"	24	Ra 0.2 (8 Ra) EP	•	o	×	×	×
	NPT 1/4"	60-BS3-4N-	3 - 1/8"		Ra 0.8 (32 Ra)	•	o	×	×	×
	Blank Plug	50-BS3-BC-	1 - 1/2"		-	•	×	×	×	•
4	FS 1/4"	60-BS4-4FS-	3 - 3/8"	24	Ra 0.2 (8 Ra) EP	•	o	×	×	×
	NPT 1/4"	60-BS4-4N-	3 - 1/8"		Ra 0.8 (32 Ra)	•	o	×	×	×
	Blank Plug	50-BS4-BC-	1 - 1/2"		-	•	×	×	×	•
6	FS 1/4"	60-BS6-4FS-	3 - 1/4"	31	Ra 0.2 (8 Ra) EP	•	o	o	o	×
	NPT 1/4"	60-BS6-4N-	3"		Ra 0.8 (32 Ra)	•	o	o	o	×
	Blank Plug	50-BS6-BP-	1 - 1/2"		-	•	×	o	o	•
7	FS 1/4"	60-BS7-4FS-	3 - 1/4"	31	Ra 0.2 (8 Ra) EP	•	o	×	×	×
	NPT 1/4"	60-BS7-4N-	3"		Ra 0.8 (32 Ra)	•	o	×	×	×
	Blank Plug	50-BS7-BP-	1 - 1/2"		-	•	×	×	×	•
8	FS 1/4"	60-BS8-4FS-	2 - 3/8"	28	Ra 0.2 (8 Ra) EP	•	o	×	×	×
	NPT 1/4"	60-BS8-4N-	3 - 1/8"		Ra 0.8 (32 Ra)	•	o	×	×	×
	Blank Plug	50-BS8-BP-	1 - 1/2"		-	•	×	×	×	•
10	FS 1/4"	60-BS10-4FS-	2 - 3/8"	28	Ra 0.2 (8 Ra) EP	•	o	×	×	×
	NPT 1/4"	60-BS10-4N-	3 - 1/8"		Ra 0.8 (32 Ra)	•	o	×	×	×
	Blank Plug	50-BS10-BP-	1 - 1/2"		-	•	×	×	×	•
11	FS 1/4"	60-BS11-4FS-	3 - 1/4"	28	Ra 0.2 (8 Ra) EP	•	o	×	×	×
	NPT 1/4"	60-BS11-4N-	3"		Ra 0.8 (32 Ra)	•	o	×	×	×
	Blank Plug	50-BS11-BP-	1 - 1/2"		-	•	×	×	×	•
13	FS 1/4"	60-BS13-4FS-	3 - 1/4"	24	Ra 0.2 (8 Ra) EP	•	o	×	×	×
	NPT 1/4"	60-BS13-4N-	3"		Ra 0.8 (32 Ra)	•	o	×	×	×
	Blank Plug	50-BS13-BP-	1 - 1/2"		-	•	×	×	×	•
14	FS 1/4"	60-BS14-4FS-	3 - 1/4"	22	Ra 0.2 (8 Ra) EP	•	o	o	o	×
	NPT 1/4"	60-BS14-4N-	3"		Ra 0.8 (32 Ra)	•	o	o	o	×
	Blank Plug	50-BS14-BP-	1 - 1/2"		-	•	×	o	o	•
15	FS 1/4"	60-BS15-4FS-	3 - 1/4"	22	Ra 0.2 (8 Ra) EP	•	o	×	×	×
	NPT 1/4"	60-BS15-4N-	3"		Ra 0.8 (32 Ra)	•	o	×	×	×
	Blank Plug	50-BS15-BP-	1 - 1/2"		-	•	×	×	×	•
17	FS 1/4"	60-BS17-4FS-	3 - 1/4"	19	Ra 0.2 (8 Ra) EP	•	o	×	×	×
	NPT 1/4"	60-BS17-4N-	3"		Ra 0.8 (32 Ra)	•	o	×	×	×
	Blank Plug	50-BS17-BP-	1 - 1/2"		-	•	×	×	×	•

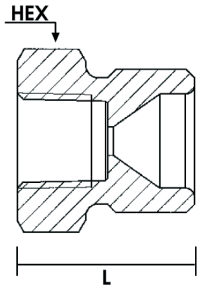
• = available
o = on request
× = not available

STANDARD ADAPTORS, BLANK PLUGS & CAPS | BS (continued)

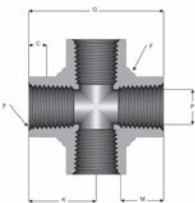
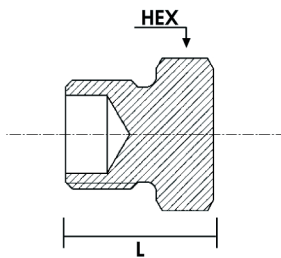
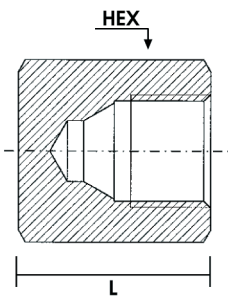
ADAPTORS FACE SEAL



ADAPTORS NPT



CONNECTORS BLANK CAPS



STANDARD CYLINDER VALVE OUTLET SEAL CAPS & PLUGS | BS

BS 341 Ref. Number	End Connection	Ref Number	Length (L)	Fig.	S 303	S 316	B
		Outlet Seal Cap					
2	Outlet Plug	70-BS2-OP_	1.1"	2	•	×	•
3	Outlet Cap	70-BS3-OP_	1.1"	2	•	×	•
4	Outlet plug	70-BS4-OP_	1.1"	2	•	×	•
6	Outlet Cap	70-BS6-OC_	0.57"	1	•	×	•
7	Outlet Cap	70-BS7-OC_	0.57"	1	•	×	•
8	Outlet Plug	70-BS8-OC_	0.57"	1	•	×	•
10	Outlet Cap	70-BS10-OC_	0.57"	1	•	×	×
11	Outlet Cap	70-BS11-OC_	0.57"	1	•	×	•
13	Outlet Cap	70-BS13-OC_	0.57"	1	•	×	•
14	Outlet Cap	70-BS14-OC_	0.57"	1	•	×	•
15	Outlet Cap	70-BS15-OC_	0.57"	1	•	×	•
17	Outlet Cap	70-BS17-OC_	0.57"	1	•	×	•

• = available
 o = on request
 × = not available

CYLINDER VALVES OUTLET SEAL CAPS



CYLINDER VALVES OUTLET SEAL PLUGS



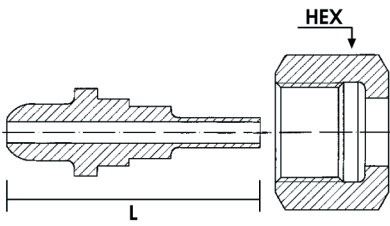
STANDARD INLET CONNECTORS | BS

BS 341 Ref. Number	End Connection	Ref Number Nipple, Nut, Gasket	Length (L) mm (inch)	Ref Number Nut/Plug	HEX Nut/ Plug in mm	Internal Surface Finish μm (μinch)	Ref Number Nipple	Ref Number	Ref Number	Ref Number	Ref Number	Nipple Available Material				
								Gasket (Material)	Gasket (Material)	Gasket (Material)	Gasket (Material)	S	V	N	H	B
C	BW 1/4"	40-NFC-4BW-	57.15 (2-1/2")			Ra 0.2 (8 Ra) EP	10-NFC-4BW-					0	•	×	×	×
	FS 1/4"	40-NFC-4FS-	89 (3-1/2")	20-NFC-N-	27	Ra 0.2 (8 Ra) EP	10-NFC-4FS-	30-EP-1	30-FP-1	30-CR-1		0	•	×	×	×
	NPT 1/4"	40-NFC-4N-	89 (3-1/2")			Ra 0.8 (32 Ra)	10-NFC-4N-					•	0	×	×	•
E	BW 1/4"	40-NFE-4BW-	57.15 (2-1/2")			Ra 0.2 (8 Ra) EP	10-NFE-4BW-					0	•	×	×	×
	FS 1/4"	40-NFE-4FS-	89 (3-1/2")	20-NFE-N-	27	Ra 0.2 (8 Ra) EP	10-NFE-4FS-	30-EP-1	30-FP-1	30-CR-1		0	•	×	×	×
	NPT 1/4"	40-NFE-4N-	89 (3-1/2")			Ra 0.8 (32 Ra)	10-NFE-4N-					•	0	×	×	•
F	BW 1/4"	40-NFF-4BW-	76.3 (3")			Ra 0.2 (8 Ra) EP	10-NFF-4BW-					0	•	×	×	×
	FS 1/4"	40-NFF-4FS-	89 (3-1/2")	20-NFF-N-	27	Ra 0.2 (8 Ra) EP	10-NFF-4FS-	30-EP-1	30-FP-1	30-CR-1		0	•	×	×	×
	NPT 1/4"	40-NFF-4N-	89 (3-1/2")			Ra 0.8 (32 Ra)	10-NFF-4N-					•	0	×	×	•
G	BW 1/4"	40-NFG-4BW-	76.3 (3")			Ra 0.2 (8 Ra) EP	10-NFG-4BW-					0	•	×	×	×
	FS 1/4"	40-NFG-4FS-	89 (3-1/2")	20-NFG-N-	27	Ra 0.2 (8 Ra) EP	10-NFG-4FS-	30-EP-1	30-FP-1	30-CR-1		0	•	×	×	×
	NPT 1/4"	40-NFG-4N-	89 (3-1/2")			Ra 0.8 (32 Ra)	10-NFG-4N-					•	0	×	×	•
J	BW 1/4"	40-NFJ-4BW-	57.15 (2-1/2")			Ra 0.2 (8 Ra) EP	10-NFJ-4BW-					0	•	0	0	×
	FS 1/4"	40-NFJ-4FS-	76.3 (3")	20-NFJ-N-	32	Ra 0.2 (8 Ra) EP	10-NFJ-4FS-			30-PV-13		0	•	0	0	×
	NPT 1/4"	40-NFJ-4N-	76.3 (3")			Ra 0.8 (32 Ra)	10-NFJ-4N-					•	0	0	0	•
K	BW 1/4"	40-NFK-4BW-	60.3 (2-5/8")			Ra 0.2 (8 Ra) EP	10-NFK-4BW-					0	•	0	0	×
	FS 1/4"	40-NFK-4FS-	76.3 (3")	20-NFK-N-	32	Ra 0.2 (8 Ra) EP	10-NFK-4FS-	30-EP-1	30-FP-1	30-CR-1		0	•	0	0	×
	NPT 1/4"	40-NFK-4N-	76.3 (3")			Ra 0.8 (32 Ra)	10-NFK-4N-					•	0	0	0	•
P	BW 1/4"	40-NFP-4BW-	60.3 (2-5/8")			Ra 0.2 (8 Ra) EP	10-NFP-4BW-					0	•	0	0	×
	FS 1/4"	40-NFP-4FS-	76.3 (3")	20-NFP-N-	32	Ra 0.2 (8 Ra) EP	10-NFP-4FS-	30-EP-1	30-FP-1	30-CR-1		0	•	0	0	×
	NPT 1/4"	40-NFP-4N-	76.3 (3")			Ra 0.8 (32 Ra)	10-NFP-4N-					•	0	0	0	•

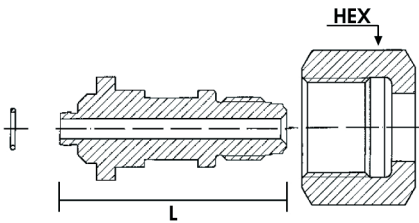
NF E29/650 Ref. Letter	End Connection	Ref Number Nipple, Nut, Gasket	Length (L) mm (inch)	Ref Number Nut/ Plug	HEX Nut/Plug in mm	Internal Surface Finish μm (μinch)	PURETEC Number Nipple
C	BW 1/4"	41-NFC-4BW-	57.15 (2-1/2")			Ra 0.2 (8 Ra) EP	11-NFC-4BW-
	FS 1/4"	41-NFC-4FS-	89 (3-1/2")	21-NFC-N-	27	Ra 0.2 (8 Ra) EP	11-NFC-4FS-
	NPT 1/4"	41-NFC-4N-	89 (3-1/2")			Ra 0.8 (32 Ra)	11-NFC-4N-
E	BW 1/4"	41-NFE-4BW-	57.15 (2-1/2")			Ra 0.2 (8 Ra) EP	11-NFE-4BW-
	FS 1/4"	41-NFE-4FS-	89 (3-1/2")	21-NFE-N-	27	Ra 0.2 (8 Ra) EP	11-NFE-4FS-
	NPT 1/4"	41-NFE-4N-	89 (3-1/2")			Ra 0.8 (32 Ra)	11-NFE-4N-
F	BW 1/4"	41-NFF-4BW-	76.3 (3")			Ra 0.2 (8 Ra) EP	11-NFF-4BW-
	FS 1/4"	41-NFF-4FS-	89 (3-1/2")	21-NFF-N-	27	Ra 0.2 (8 Ra) EP	11-NFF-4FS-
	NPT 1/4"	41-NFF-4N-	89 (3-1/2")			Ra 0.8 (32 Ra)	11-NFF-4N-
G	BW 1/4"	41-NFG-4BW-	76.3 (3")			Ra 0.2 (8 Ra) EP	11-NFG-4BW-
	FS 1/4"	41-NFG-4FS-	89 (3-1/2")	21-NFG-N-	27	Ra 0.2 (8 Ra) EP	11-NFG-4FS-
	NPT 1/4"	41-NFG-4N-	89 (3-1/2")			Ra 0.8 (32 Ra)	11-NFG-4N-

• = available
o = on request
× = not available

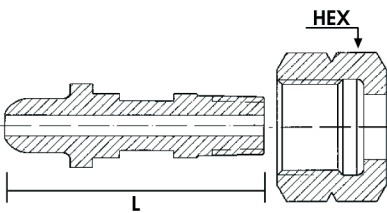
BUTT WELD



FACE SEAL



NPT



STANDARD ADAPTORS, BLANK PLUGS & CAPS | AFNOR

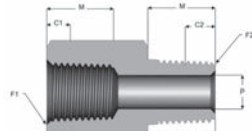
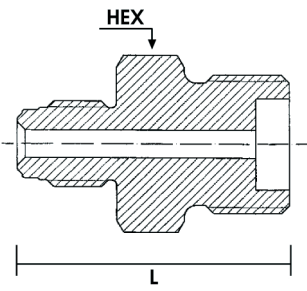
NF E29/650 Ref. Number	End Connection	Puretec Ref. Number Adaptor Blank Plug/Cap	Length (L) mm (inch)	Hex Blank Plug / Nut in mm	Internal Surface Finish μm (μinch)	Nipple Available Material				
						S	V	N	H	B
C	FS 1/4"	60-NFC-4FS-__	60 (2-5/8")	27	Ra 0.2 (8 Ra) EP	•	o	×	×	×
	NPT 1/4"	60-NFC-4N-__	60 (2-5/8")		Ra 0.8 (32 Ra)	•	o	×	×	×
	Blank Plug	50-NFC-BC-__	38 (1-1/2")		-	•	×	×	×	•
E	FS 1/4"	60-NFE-4FS-__	60 (2-5/8")	27	Ra 0.2 (8 Ra) EP	•	o	×	×	×
	NPT 1/4"	60-NFE-4N-__	60 (2-5/8")		Ra 0.8 (32 Ra)	•	o	×	×	×
	Blank Plug	50-NFE-BC-__	38 (1-1/2")		-	•	×	×	×	•
F	FS 1/4"	60-NFF-4FS-__	60 (2-5/8")	27	Ra 0.2 (8 Ra) EP	•	o	×	×	×
	NPT 1/4"	60-NFF-4N-__	60 (2-5/8")		Ra 0.8 (32 Ra)	•	o	×	×	×
	Blank Plug	50-NFF-BC-__	38 (1-1/2")		-	•	×	×	×	•
G	FS 1/4"	60-NFG-4FS-__	60 (2-5/8")	27	Ra 0.2 (8 Ra) EP	•	o	o	o	×
	NPT 1/4"	60-NFG-4N-__	60 (2-5/8")		Ra 0.8 (32 Ra)	•	o	o	o	×
	Blank Plug	50-NFG-BP-__	38 (1-1/2")		-	•	×	o	o	•
J	FS 1/4"	60-NFJ-4FS-__	60 (2-5/8")	32	Ra 0.2 (8 Ra) EP	•	o	o	o	×
	NPT 1/4"	60-NFJ-4N-__	60 (2-5/8")		Ra 0.8 (32 Ra)	•	o	o	o	×
	Blank Plug	50-NFJ-BP-__	38 (1-1/2")		-	•	×	o	o	•
K	FS 1/4"	60-NFK-4FS-__	76.3 (3")	32	Ra 0.2 (8 Ra) EP	•	o	o	o	×
	NPT 1/4"	60-NFK-4N-__	76.3 (3")		Ra 0.8 (32 Ra)	•	o	o	o	×
	Blank Plug	50-NFK-BP-__	44.5 (1-3/4")		-	•	×	o	o	•
P	FS 1/4"	60-NFP-4FS-__	76.3 (3")	32	Ra 0.2 (8 Ra) EP	•	o	o	o	×
	NPT 1/4"	60-NFP-4N-__	76.3 (3")		Ra 0.8 (32 Ra)	•	o	o	o	×
	Blank Plug	50-NFP-BP-__	44.5 (1-3/4")		-	•	×	o	o	•

• = available

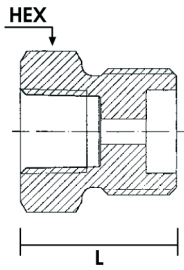
o = on request

× = not available

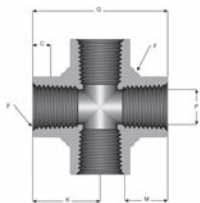
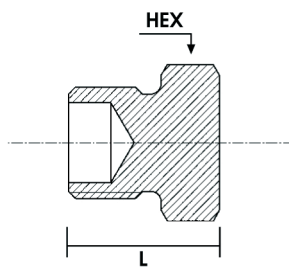
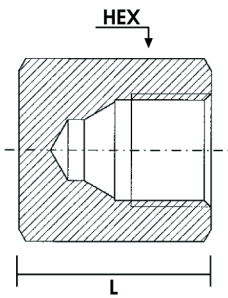
ADAPTORS FACE SEAL



ADAPTORS NPT



CONNECTORS BLANK CAPS

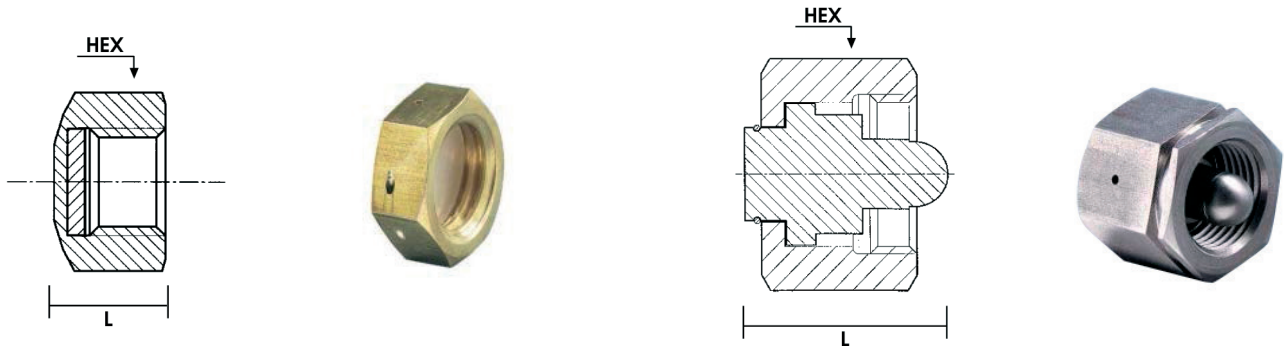


STANDARD CYLINDER VALVE OUTLET SEAL CAPS & PLUGS | AFNOR

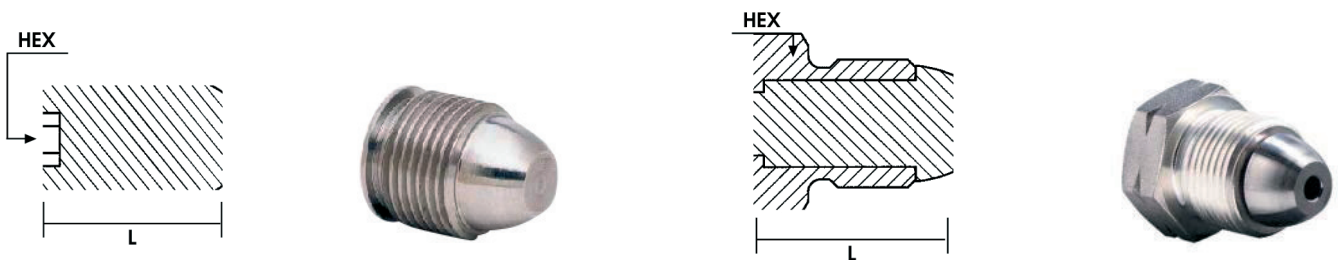
BS 341 Ref. Number	End Connection	Ref Number	Length (L)	HEX Outlet seal cap in mm	Fig.	S 303	S 316	B
		Outlet Seal Cap						
C	Outlet Cap	30-NFC-OC_	38 (1.½")	30	1-2	•	0	•
E	Outlet Cap	30-NFE-OC_	38 (1.½")	32	1-2	•	0	•
F	Outlet plug	30-NFF-OP_	31.8 (1.¼")	30	3-4	•	0	•
G	Outlet plug	30-NFG-OP_	31.8 (1.¼")	30	3-4	•	0	•
J	Outlet Cap	30-NFJ-OC_	14.8 (0.58")	32	1	•	0	×
K	Outlet Cap	30-NFK-OC_	31.8 (1.¼")	32	2	•	0	×
P	Outlet Cap	30-NFP-OC_	31.8 (1.¼")	27	2	•	0	×

• = available
 0 = on request
 × = not available

CYLINDER VALVES OUTLET SEAL CAPS



CYLINDER VALVES OUTLET SEAL PLUGS

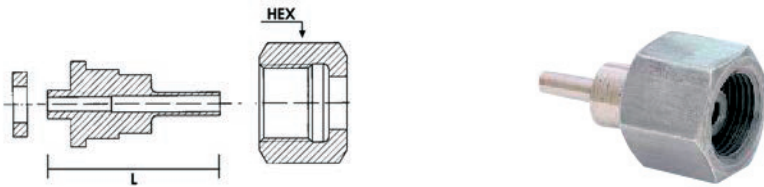


STANDARD INLET CONNECTORS | JIS

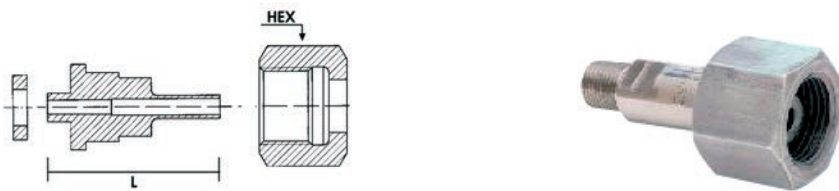
JIS B 8246 Ref. Number	End Connection	Ref Number Nipple, Nut, Gasket	Length (L)	Internal Surface Finish μm (μinch)	Ref Number Nipple	Ref Number Nut/Plug	HEX Nut/Plug in mm	Ref Number Gasket (Material)		Nipple Available Material				
								PVDF	PCTFE	S	V	N	H	B
22R	BW 1/4"	40-JIS22R-4BW-	2-1/8"	Ra 0.2 (8 Ra) EP	10-JIS22R-4BW-					0	•	×	×	×
	FS 1/4"	40-JIS22R-4FS-	2-1/8"	Ra 0.2 (8 Ra) EP	10-JIS22R-4FS-	20-JIS22R-N-	1.14"	30-PV-14	30-PC-14	0	•	×	×	×
	NPT 1/4"	40-JIS22R-4N-	3"	Ra 0.8 (32 Ra)	10-JIS22R-4N-					•	0	×	×	•
22L	BW 1/4"	40-JIS22L-4BW-	2-1/8"	Ra 0.2 (8 Ra) EP	10-JIS22L-4BW-					0	•	×	×	×
	FS 1/4"	40-JIS22L-4FS-	2-1/8"	Ra 0.2 (8 Ra) EP	10-JIS22L-4FS-	20-JIS22L-N-	1.14"	30-PV-14	30-PC-14	0	•	×	×	×
	NPT 1/4"	40-JIS22L-4N-	3"	Ra 0.8 (32 Ra)	10-JIS22L-4N-					•	0	×	×	•
23R	BW 1/4"	40-JIS23R-4BW-	3"	Ra 0.2 (8 Ra) EP	10-JIS23R-4BW-					0	•	×	×	×
	FS 1/4"	40-JIS23R-4FS-	3"	Ra 0.2 (8 Ra) EP	10-JIS23R-4FS-	20-JIS23R-N-	1.1/4"	Metal to Metal sealing	Metal to Metal sealing	0	•	×	×	×
	NPT 1/4"	40-JIS23R-4N-	3-1/2"	Ra 0.8 (32 Ra)	10-JIS23R-4N-					•	0	×	×	•
23L	BW 1/4"	40-JIS23L-4BW-	3"	Ra 0.2 (8 Ra) EP	10-JIS23L-4BW-					0	•	×	×	×
	FS 1/4"	40-JIS23L-4FS-	3"	Ra 0.2 (8 Ra) EP	10-JIS23L-4FS-	20-JIS23L-N-	1.1/4"	Metal to Metal sealing	Metal to Metal sealing	0	•	×	×	×
	NPT 1/4"	40-JIS23L-4N-	3-1/2"	Ra 0.8 (32 Ra)	10-JIS23L-4N-					•	0	×	×	•
26R	BW 1/4"	40-JIS26R-4BW-	2-1/8"	Ra 0.2 (8 Ra) EP	10-JIS26R-4BW-					0	•	0	0	×
	FS 1/4"	40-JIS26R-4FS-	2-1/8"	Ra 0.2 (8 Ra) EP	10-JIS26R-4FS-	20-JIS26R-N-	1.1/4"	30-PV-15	30-PC-15	0	•	0	0	×
	NPT 1/4"	40-JIS26R-4N-	3"	Ra 0.8 (32 Ra)	10-JIS26R-4N-					•	0	0	0	•
26L	BW 1/4"	40-JIS26L-4BW-	2-1/8"	Ra 0.2 (8 Ra) EP	10-JIS26L-4BW-					0	•	0	0	×
	FS 1/4"	40-JIS26L-4FS-	2-1/8"	Ra 0.2 (8 Ra) EP	10-JIS26L-4FS-	20-JIS26L-N-	1.1/4"	30-PV-15	30-PC-15	0	•	0	0	×
	NPT 1/4"	40-JIS26L-4N-	3"	Ra 0.8 (32 Ra)	10-JIS26L-4N-					•	0	0	0	•

• = available
 0 = on request
 × = not available

BUTT WELD



FACE SEAL



NPT

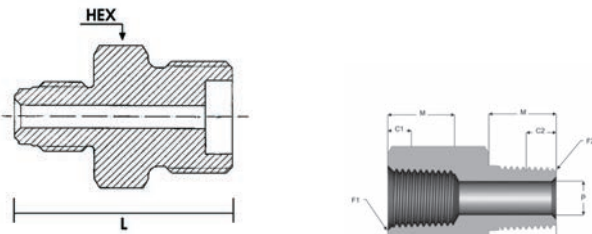


STANDARD ADAPTORS, BLANK PLUGS & CAPS | JIS

JIS B 8246 Ref. Number	End Connection	Ref Number adaptor Blank Plug/Cap	Length (L)	HEX Blank Plug/ Nut	Internal Surface Finish μm (μinch)	Nipple Available Material				
						S	V	N	H	B
22R	FS 1/4"	60-JIS22R-4FS-	2-1/4"	1.14"	Ra 0.2 (8 Ra) EP	0	•	×	×	×
	NPT 1/4"	60-JIS22R-4N-	2"		Ra 0.8 (32 Ra)	0	•	×	×	×
	Blank Plug	50-JIS22R-BP-	1-1/2"		-	•	0	×	×	•
22L	FS 1/4"	60-JIS22L-4FS-	2-1/4"	1.14"	Ra 0.2 (8 Ra) EP	0	•	×	×	×
	NPT 1/4"	60-JIS22L-4N-	2"		Ra 0.8 (32 Ra)	0	•	×	×	×
	Blank Plug	50-JIS22L-BP-	1-1/2"		-	•	0	×	×	•
23R	FS 1/4"	60-JIS23R-4FS-	2-1/4"	1.14"	Ra 0.2 (8 Ra) EP	0	•	×	×	×
	NPT 1/4"	60-JIS23R-4N-	2"		Ra 0.8 (32 Ra)	0	•	×	×	×
	Blank Cap	50-JIS23R-BP-	1-1/2"		-	•	0	×	×	•
23L	FS 1/4"	60-JIS23L-4FS-	2-1/4"	1.14"	Ra 0.2 (8 Ra) EP	0	•	×	×	×
	NPT 1/4"	60-JIS23L-4N-	3"		Ra 0.8 (32 Ra)	0	•	×	×	×
	Blank Cap	50-JIS23L-BP-	1-1/2"		-	•	0	×	×	•
26R	FS 1/4"	60-JIS26R-4FS-	2-1/8"	1.14"	Ra 0.2 (8 Ra) EP	0	•	0	0	×
	NPT 1/4"	60-JIS26R-4N-	1-7/8"		Ra 0.8 (32 Ra)	0	•	0	0	×
	Blank Plug	50-JIS26R-BP-	3"		-	•	0	0	0	•
26L	FS 1/4"	60-JIS26L-4FS-	2-1/8"	1.14"	Ra 0.2 (8 Ra) EP	0	•	0	0	×
	NPT 1/4"	60-JIS26L-4N-	1-7/8"		Ra 0.8 (32 Ra)	0	•	0	0	×
	Blank Plug	50-JIS26L-BP-	1-1/2"		-	•	0	0	0	•

• = available
 0 = on request
 × = not available

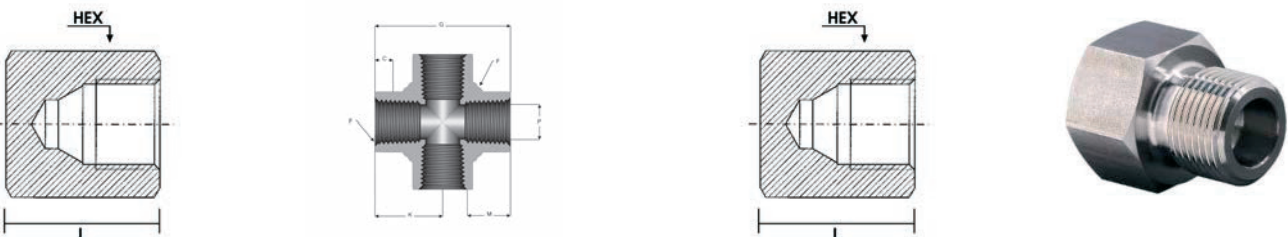
ADAPTORS FACE SEAL



ADAPTORS NPT



CONNECTORS BLANK CAPS

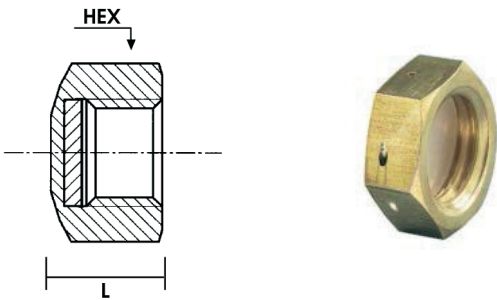


STANDARD CYLINDER VALVE OUTLET SEAL CAPS & PLUGS | JIS

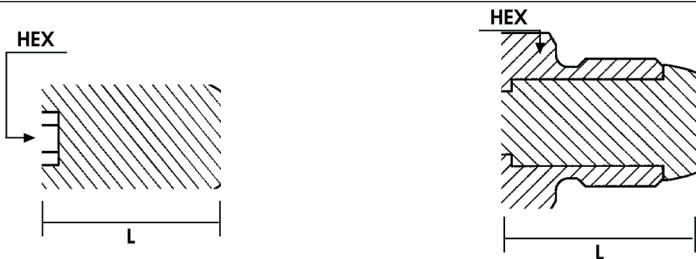
JIS B 8246 Ref. NuMber	End Connection	Ref Number	Length (L)	HEX Outlet seal cap	Fig.	S 303	S 316	B
		Outlet Seal Cap						
22R	Outlet Cap	70-JIS22R-OC_	0.57"	1.14"	1	•	0	•
22L	Outlet Cap	70-JIS22L-OC_	0.57"	1.14"	1	•	0	•
23R	Outlet plug	70-JIS23R-OP_	1-3/4"	1.1/4"	2	•	0	•
23L	Outlet plug	70-JIS23L-OP_	1-3/4"	1.1/4"	2	•	0	•
26R	Outlet Cap	70-JIS26R-OC_	0.57"	1.1/4"	1	•	0	•
26L	Outlet Cap	70-JIS26L-OC_	0.57"	1.1/4"	1	•	0	•

• = available
 0 = on request
 × = not available

CYLINDER VALVES OUTLET SEAL CAPS



CYLINDER VALVES OUTLET SEAL PLUGS



A FULL LINE OF GAS CONTROL SOLUTIONS



COMPLETE SOLUTIONS FROM SOURCE TO PROCESS.

ROTAREX is helping engineers worldwide to get better gas results: from ultra high purity production and medical care facilities to industrial and LPG applications, as well as alternative energy vehicles, fire suppression, diving, aerospace, cryogenics, laboratory, petro-chemical and welding. ROTAREX applies almost 100 years of know-how and experience to custom design, develop and manufacture the high performance valves, regulators and fittings to suit your needs, all in one hand. Discover the difference ROTAREX can make in your world.

CYLINDER VALVES

EQUIPMENT

FIRETEC

AUTOMOTIVE

LPG/SRG

MEDITEC



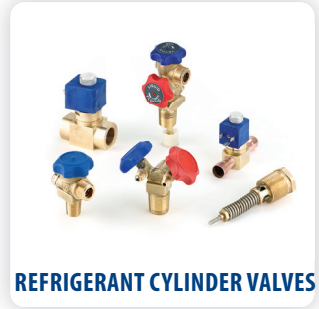
ULTRA HIGH PURITY VALVES



MEDICAL VALVES & EQUIPMENT



INDUSTRIAL CYLINDER VALVES



REFRIGERANT CYLINDER VALVES



PRESSURE REGULATORS



SUPPLY & SWITCH OVER BOARDS



LINE VALVES



FITTINGS & ADAPTORS



**FIXED INSTALLATION
FIRE SYSTEMS**



**OBJECT FIRE SUPPRESSION
SYSTEMS**



**AUTOMOTIVE VALVES
& REGULATORS**



WATER CARBONATION



**LPG CYLINDER VALVES
& REGULATORS**



**DIGITAL MEASUREMENT
SYSTEMS**

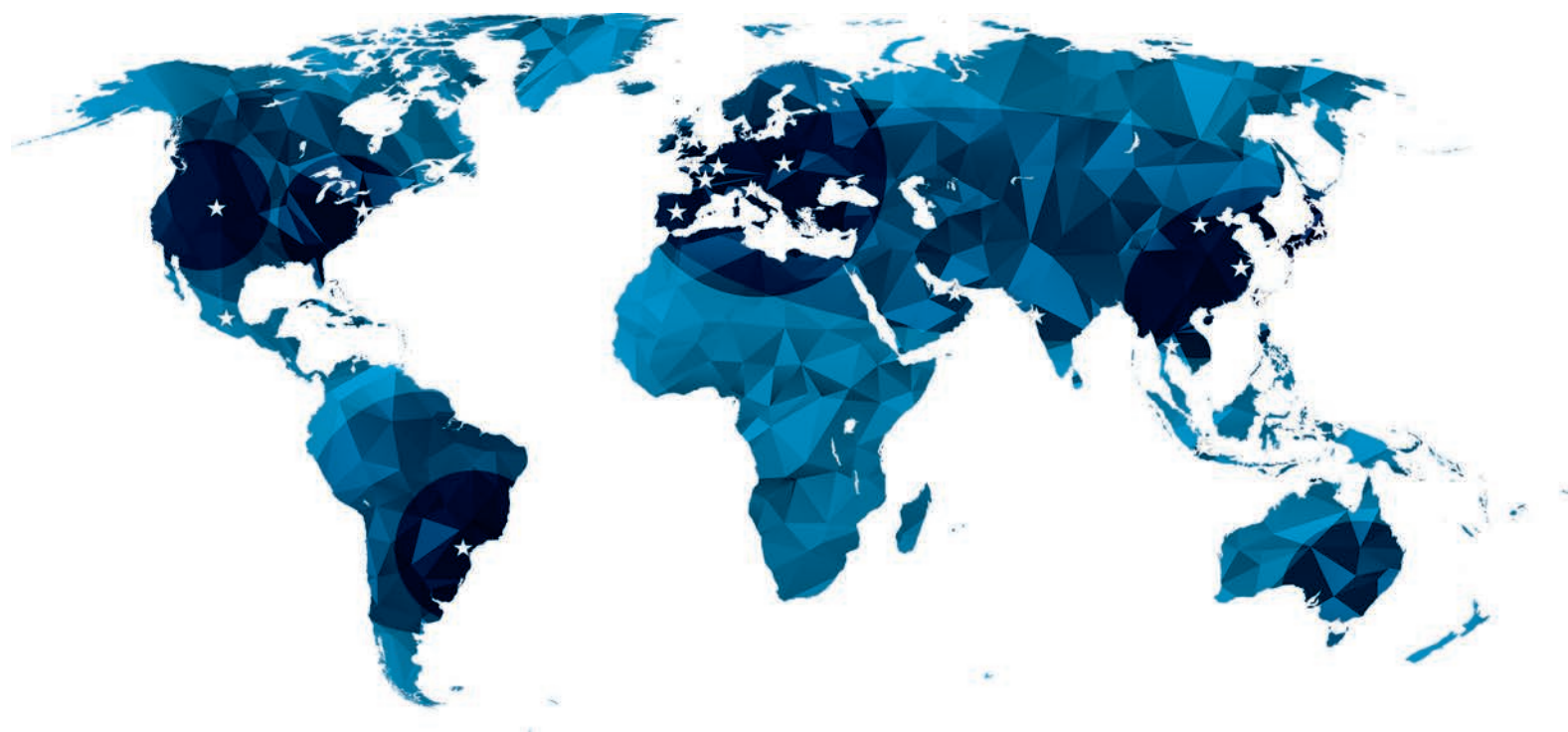


PLASTIC INJECTION MOULDING



WORLDWIDE HEADQUARTERS

ROTAREX S.A.
24, rue de Diekirch,
L-7440 Lintgen
Luxembourg
Tel.: +352 32 78 32-1
Fax: +352 32 78 32-854
E-mail: info@rotarex.com



REGIONAL / COUNTRY HEADQUARTERS

NORTH AMERICA

USA
Rotarex North America
Hackettstown
E-mail: northamerica@rotarex.com

SOUTH AMERICA

BRASIL
Rotarex Brazil Ltda
São Paulo
E-mail: brasil@rotarex.com

CENTRAL AMERICA

MEXICO
Rotarex Mexico
Mexico City
E-mail: mexico@rotarex.com

EUROPE

EUROPEAN HEADQUARTERS
Rotarex S.A. Luxembourg
24, rue de Diekirch,
L-7440 Lintgen, Luxembourg
Tel.: +352 32 78 32-1
E-mail: salesceodeux@rotarex.com

ITALY
Rotarex Italia S.r.l.
Ciliverghe di Mazzano
E-mail: italia@rotarex.com

SPAIN
Rotarex Spain
Madrid
E-mail: spain@rotarex.com

FRANCE
Rotarex France
Paris
E-mail: france@rotarex.com

GERMANY
Rotarex Germany
Gladenbach
E-mail: germany@rotarex.com

POLAND
Rotarex Polska
Brzeg
E-mail: polska@rotarex.com

UNITED KINGDOM
Rotarex UK Ltd.
London
E-mail: uk@rotarex.com

ASIA - PACIFIC

SINGAPORE
Rotarex Fareast Pte Ltd
Singapore
E-mail: fareast@rotarex.com

CHINA
Rotarex Star
Shanghai
E-mail: china@rotarex.com

JAPAN
Rotarex Japan Ltd
Tokyo
E-mail: japan@rotarex.com

INDIA
Rotarex ENGG. PVT. LTD.
Mumbai
E-mail: india@rotarex.com

SOUTH KOREA
Rotarex South Korea
Hwasung-si
E-mail: korea@rotarex.com

THAILAND
Rotarex (Thailand) Co Ltd.
Pakkret
E-mail: thailand@rotarex.com

TAIWAN
Rotarex Taiwan
Taipei
E-mail: info-taiwan@rotarex.com

MALAYSIA
Rotarex Malaysia
Kuala Lumpur
E-mail: malaysia@rotarex.com

PHILIPPINES
Rotarex Philippines
Manila
E-mail: philippines@rotarex.com

INDONESIA
Rotarex Indonesia
Jakarta
E-mail: Indonesia@rotarex.com

VIETNAM
Rotarex Vietnam
Hanoi
E-mail: vietnam@rotarex.com

MIDDLE EAST / AFRICA

MIDDLE EAST
Rotarex Middle East
Dubai
E-mail: middle-east@rotarex.com



For more contact details go to
www.rotarex.com/locations